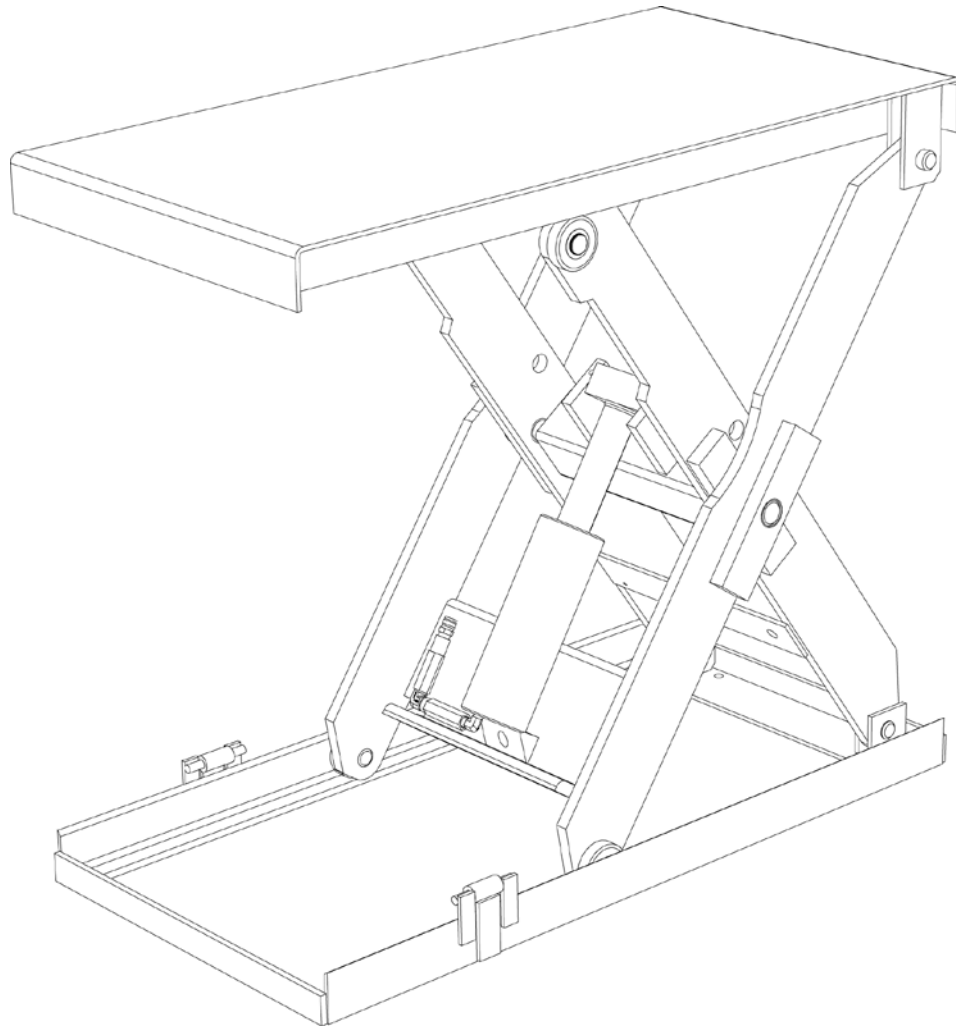


INSTALLATION, OPERATION AND SERVICE MANUAL

SERIES 35 SCISSORS LIFT



Autoquip[®]

P.O. Box 1058 • 1058 West Industrial Avenue • Guthrie, OK 73044-1058 • 888-811-9876
405-282-5200 • FAX: 405-282-3302 • www.autoquip.com
Item #830S35

Version 5.0
3/2013

1.	Introduction And Warranty	4
1.1	Introduction	4
1.1.1	Identification	4
1.1.2	Inspection	4
1.1.3	Planned Maintenance Program	4
1.2	Responsibility Of Owners/Users	4
1.2.1	Deflection	4
1.2.2	Inspection & Maintenance	5
1.2.3	Removal From Service	5
1.2.4	Repairs	5
1.2.5	Operators	5
1.2.6	Before Operation	5
1.2.7	During Operation	5
1.2.8	Modifications Or Alterations	5
1.3	Warranty	6
2.	Specifications	7
2.1	Model Specifications	7
2.2	Lift Specifications	7
2.3	Load Capacity	8
2.4	Unbalanced Loading	8
2.5	Pump Pressure	8
2.6	Lift Duty	8
3.	Safety	9
3.1	Safety Signal Words	9
3.2	Installation	9
3.3	Operation	10
3.4	Hydraulics	10
3.5	Maintenance	11
3.6	Modifications	12
3.7	Labels	12
4.	Installation	15
4.1	Remote Power Unit Installation	15
4.2	Power Unit Wiring	15
4.2.1	Intermittent Remote Power Unit	15
4.2.2	Heavy Duty Remote Power Unit	15
4.3	Pit Installation	16
4.4	Shimming And Anchoring Lift To Concrete	20
4.5	Accordion Skirt Installation	20
4.6	Toe Indicator Skirt	22
5.	Operation	24
5.1	Raise And Lower Lift	24
6.	Maintenance	25
6.1	Maintenance Device	25
6.2	Routine Maintenance	27
6.2.1	Every Day Or 10 Hours Of Operation	28
6.2.2	Every Month Or 100 Hours Of Operation	28
6.2.3	Every Year Or 1000 Hours Of Operation	28
6.2.4	Oil Requirements	29
6.2.5	Oil Capacity	29
6.3	General Maintenance	30
6.3.1	Hydraulic Cylinder Repair	30
6.3.2	Bleeding Air From System	31
6.3.3	Hydraulic Velocity Fuse (HVF) Replacement	32
6.3.4	Hose Orientation	32

6.3.5	Schematics and Field Wiring Details	33
6.3.6	Troubleshooting.....	43
7.	Parts Lists	47

I. INTRODUCTION AND WARRANTY

I.1 Introduction

Please read and understand this manual prior to installation or operation of this lift. Failure to do so could lead to property damage and/or serious personal injury. If you have any questions, call a local dealer or *Autoquip Corporation* at 1-888-811-9876 or 405-282-5200.

Please record the following information and refer to it when calling your dealer or Autoquip.

Model Number: _____ Serial Number: _____

Installation Date ____/____/____

I.1.1 Identification

When ordering parts or requesting information or service on this lift, PLEASE REFER TO THE MODEL AND SERIAL NUMBER. This information is on a nameplate attached to the leg assembly. Replacement parts are available from a local *Autoquip* distributor.

I.1.2 Inspection

Upon receipt of lift, perform a visual inspection to determine whether the lift has been damaged in transit. Any damage found must be noted on delivery receipt. In addition to this preliminary inspection, carefully inspect lift for concealed damage. Any concealed damage found that was not noted on delivery receipt must be reported in writing to the delivering carrier within 48 hours.

Use the following checklist for inspection of lift:

1. Examine entire unit for any signs of mishandling. Carefully check power unit and controls.
2. Thoroughly examine all connections, making sure they have not vibrated loose during transit, and inspect wiring for any signs of damage.
3. After installation, raise lift and inspect base frame, platform, scissors assembly, and cylinder plumbing connections.

I.1.3 Planned Maintenance Program

A local *Autoquip* representative provides a Planned Maintenance Program (PMP) for this equipment using factory-trained personnel. Call a local representative or *Autoquip Corporation* at 1-888-811-9876 or 405-282-5200 for more information.

I.2 Responsibility Of Owners/Users

I.2.1 Deflection

It is the responsibility of user/purchaser to advise manufacturer where deflection may be critical to the application.

I.2.2 Inspection & Maintenance

Lift must be inspected and maintained in accordance with Autoquip's operating/maintenance (O&M) manual and with other applicable safe operating practices.

I.2.3 Removal From Service

Any lift not in safe operating condition such as, but not limited to, excessive leakage, missing parts or fasteners, any bent or cracked structural members, cut or frayed electric, hydraulic, or pneumatic lines, damaged or malfunctioning controls or safety devices, etc. shall be removed from service until it is repaired to the original manufacturer's standards.

I.2.4 Repairs

All repairs must be made by a qualified technician in conformance with Autoquip's instructions.

I.2.5 Operators

Only trained personnel and authorized personnel shall be permitted to operate lift.

I.2.6 Before Operation

Before using lift, operator must:

- Read and/or had explained, and understood, manufacturer's operating instructions and safety rules.
- Inspect lift for proper operation and condition. Any suspect item must be carefully examined and a determination made by a qualified person as to whether it constitutes a hazard. All items not in conformance with Autoquip's specification must be corrected before operating lift.

I.2.7 During Operation

Use lift in accordance with Autoquip's O&M manual.

- Do not overload lift.
- Verify all safety devices are operational and in place.
- Autoquip warrants this lift for 60,000 cycles each warranty year. This number of cycles represents normal, single shift duty. Exceeding this number of cycles shortens life of lift and length of your warranty.

I.2.8 Modifications Or Alterations

Modifications or alterations to this equipment may be made only with written permission of Autoquip. Unauthorized modification or alteration will void warranty.

I.3 Warranty

The user is solely responsible for using this equipment in a safe manner and observing all of the safety guidelines provided in the Owner's Manual and on the warning labels provided with the lift. If you are unable to locate either the manual or the warning labels, please contact Autoquip or access www.autoquip.com for replacement downloads or information.

Autoquip Corporation expressly warrants that this product will be free from defects in material and workmanship under normal, intended use for a period of Two (2) Years for Labor and all electrical, mechanical, and hydraulic components, parts or devices, and warrants the structure of the lift against breakage or failure for a period of Five (5) years. The warranty period begins from the date of shipment. When making a claim, immediately send your dealer or Autoquip notice of your claim. All claims must be received by Autoquip within the warranty time period. The maximum liability of Autoquip, under this Limited Warranty, is limited to the replacement of the equipment.

This warranty shall not apply to any Autoquip lift or parts of Autoquip lift that have been damaged or broken in transit/shipping, or due directly or indirectly to misuse, abuse, vehicle impact, negligence, faulty installation, fire, floods, acts of God, accidents, or that have been used in a manner contrary to the manufacturer's limitations or recommendations as stated in the manual, or that have been repaired, altered or modified in any manner outside of Autoquip Corp's manufacturing facility or which have not been expressly authorized by Autoquip.

Autoquip Corporation makes no warranty or representation with respect to the compliance of any equipment with state or local safety or product standard codes, and any failure to comply with such codes shall not be considered a defect of material or workmanship under this warranty. Autoquip Corporation shall not be liable for any direct or consequential damages resulting from such noncompliance.

Autoquip Corporation's obligation under this warranty is limited to the replacement or repair of defective components at its factory or another location at Autoquip Corp's discretion at no cost to the owner. This is owner's sole remedy. Replacement parts (with exception of electrical components) will be warranted for a period of ninety (90) days. Except as stated herein, Autoquip Corporation will not be liable for any loss, injury, or damage to persons or property, nor for direct, indirect, or consequential damage of any kind, resulting from failure or defective operation of said equipment. All parts used to replace defective material must be genuine Autoquip parts in order to be covered by this Limited Warranty.

AUTOQUIP CORP
P.O. Box 1058, Guthrie, OK 73044-1058
Telephone: (888) 811-9876 · (405) 282-5200
Fax: (405) 282-3302
www.autoquip.com

2. SPECIFICATIONS

2.1 Model Specifications

Model Number	Travel (inches)	Lifting Capacity (lbs)	Max. End Load Capacity (lbs)	Max. Side Load Capacity (lbs)	Base and Min. Platform Size (in)	Lowered Height (in)	Raise Time (sec)	Lower Time - Fully Loaded (sec.)	App. Ship Wt. (lbs.)
24S25	24	2500	2500	2500	24 x 36	6.5	8	4	500
24S40	24	4000	4000	4000	24 x 36	6.5	11	5.5	510
24S60	24	6000	4500	4500	24 x 36	6.5	16	8	530
24S80	24	8000	4500	4500	24 x 36	7	22	11	650
36S15	36	1500	1000	750	24 x 48	6.5	28	28	580
36S25	36	2500	2500	2500	24 x 48	6.5	12	6	610
36S40	36	4000	3500	3500	24 x 48	6.5	17	8.5	620
36S60	36	6000	3500	3500	24 x 48	6.5	25	12.5	650
36S80	36	8000	3500	3500	24 x 48	7	34	17	750
48S25	48	2500	2500	2500	24 x 64	7	16	8	820
48S40	48	4000	3500	3500	24 x 64	7	22	11	830
48S60	48	6000	3500	3500	24 x 64	7	33	16.5	860
48S80	48	8000	3500	3500	24 x 64	7.5	44	22	960
60S25	60	2500	2500	2500	32 x 87	8	22	11	1750
60S40	60	4000	3500	3500	32 x 87	8	44	22	1800
60S60	60	6000	3500	3500	32 x 87	8	44	22	1850
60S80	60	8000	8000	8000	32 x 90	12	36	36	4400
60S100	60	10000	10000	9000	32 x 90	12	36	36	4500
60S120	58	12000	12000	10000	32 x 90	12.5	60	60	4600
60S150	58	15000	14000	12000	32 x 90	12.5	60	60	4700

2.2 Lift Specifications

There are many custom designs whose specifications may vary from those published for standard models. Please consult the specific General Arrangement (GA) Drawing to obtain the specifications for application-specific designs.

2.3 Load Capacity

Load capacity rating is stamped on a metal nameplate attached to lift. This figure is a net capacity rating for a lift furnished with a standard platform. If optional items are installed on lift after leaving manufacturer, deduct weight of these from load rating to obtain net capacity.

Do not exceed rated capacity of lift. Loading lift beyond its rated capacity is unsafe, will shorten operational life of lift, and will void warranty.

2.4 Unbalanced Loading

The stabilization provided is basically for balanced loads. If special attachments extend beyond the length and/or width dimensions of platform, end and/or side load capacity is reduced 2% for each one-inch extension from edge of platform. If load is rolling onto platform (in any but fully-lowered position) end and/or side load capacity is reduced by dividing the rated end/side load by 1.50 to establish an available "axle" load.

2.5 Pump Pressure

This lift incorporates a unique, positive displacement pump. Therefore, standard factory models of same manufacture cannot replace it.

Pump can operate efficiently at intermittent pressures up to 3200 PSI and continuous duty to 2500 PSI. The factory installed safety relief valve is factory-set to stay within parameters of pump and lift requirements.


2.6 Lift Duty

It is the responsibility of the user to notify Autoquip whenever a specific application is likely to demand "above normal" duty from lift. Above normal duty typically requires supplemental design features to enhance serviceable life of lift and to avoid loss of warranty.

3. SAFETY

3.1 Safety Signal Words

This Owner's Manual covers Series 35 Lift models produced by Autoquip. Before installing, operating or servicing lift, you must read, understand and follow the instructions and safety warnings in this manual. Your lift may not be equipped with some optional equipment shown in this manual.

The safety information in this manual is denoted by the safety alert symbol: 

The level of risk is indicated by the following signal words.

DANGER

DANGER – Indicates a hazardous situation, which, if not avoided, will result in death or serious injury.

WARNING

WARNING – Indicates a hazardous situation, which, if not avoided, could result in death or serious injury.

CAUTION

CAUTION – Indicates a hazardous situation, which, if not avoided, could result in minor or moderate injury.

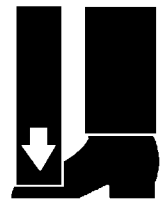
NOTICE

NOTICE – Indicates a situation that could result in damage to the lift or other property.

3.2 Installation

WARNING

Do not install lift in a pit unless pit has a bevel toe guard or other approved toe protection. A shear point can exist which can cause severe foot injury.



Lift platforms traveling below floor levels may create a toe hazard as load passes top edge of pit. This may require guarding in accordance with Federal Regulations. Guarding must be installed prior to operating lift.

⚠ WARNING

Prevent serious injury or death.

Depending on model, standard weight of lift ranges from 500 – 4700 lbs.

Use a properly rated lifting device to move and install lift.

3.3 Operation

⚠ WARNING

Prevent serious injury or death.

Scissor lifts are designed for a specific load and application. Do not change load or application from original design.

Overloading, or uneven loading, could result in load instability and cause serious personal injury.

Stay clear of lift while lift is in motion.

Never stand, sit or ride on lift unless equipped with OSHA-compliant personnel guarding on the platform.

⚠ WARNING

Prevent serious injury or death.

Lifts which travel to an elevation above floor level where distance between floor and the underside of lift platform exceeds 60" must have the scissors mechanism guarded per ANSI MH29.1.

3.4 Hydraulics

Fluids can be hazardous. Before servicing lift, check Material Safety Data Sheet (MSDS) to understand the product, safe handling procedures, and first aid measures relating to product. Follow this information when servicing or repairing lift.

Do not drain or pour any fluids or lubricants into ground. Check with local environmental agencies, recycling centers, or your Autoquip dealer for correct disposal information.

⚠ CAUTION

Any time velocity fuses have been tripped, investigate cause of trip and verify necessary corrective actions have been taken prior to operation of lift.

⚠ WARNING

Prevent serious injury or death.

Do not attempt to remove Hydraulic Velocity Fuse (HVF) until maintenance device securely supports lift and all hydraulic pressure has been relieved.

HVF is attached to elbow fitting in pressure port of cylinder. Do not use a swivel fitting between HVF and cylinder. If HVF is installed improperly, it will not lock up in event of a hydraulic line failure.

⚠ WARNING

Pressurized fluids can penetrate the skin.

Hydraulic hoses can fail from age, damage and exposure.

Do not search for hydraulic leaks without body and face protection. A tiny, almost invisible leak can penetrate the skin, thereby requiring immediate medical attention.

Use wood or cardboard to detect hydraulic leaks, never your hands.



⚠ WARNING

Spilled fluids and lubricants may be slippery and may also present a fire hazard.

Clean up spilled fluids and lubricants.



3.5 Maintenance

⚠ WARNING

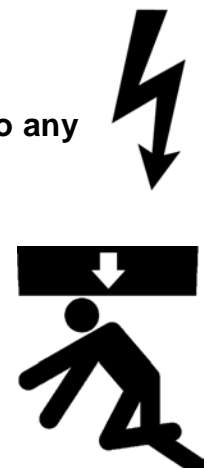
Prevent serious injury or death.

Disconnect and/or lock out electrical supply to power unit prior to any maintenance being performed.

⚠ WARNING

Prevent serious injury or death.

Never go under lift platform until load is removed and scissors mechanism is securely blocked in raised position with maintenance devices.



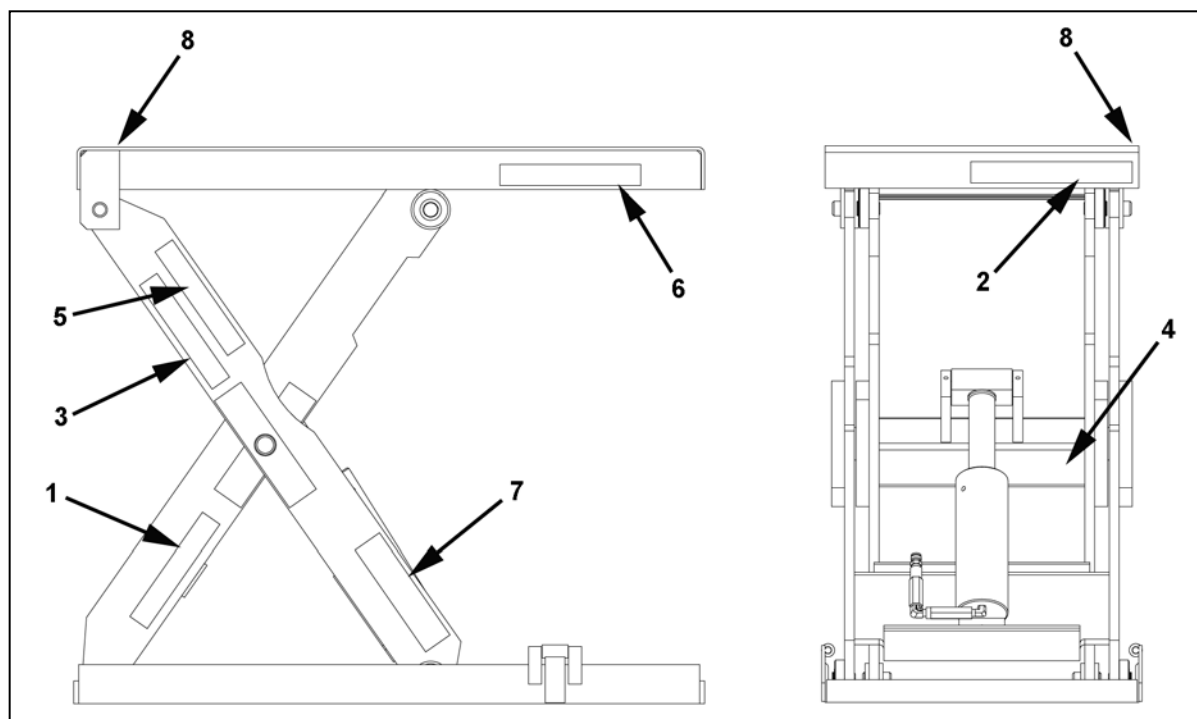
3.6 Modifications

⚠ WARNING

Prevent serious injury or death.

Do not modify lift. Autoquip cannot foresee and is not responsible for injury or damage which results from unauthorized modifications or misuse of lift.

3.7 Labels



⚠ WARNING

To protect against death or serious injury, all labels must be on lift and must be legible.

If any of these labels are missing or cannot be read, call Autoquip for replacement labels.

CAUTION

FAMILIARIZE YOURSELF WITH OPERATORS MANUAL BEFORE OPERATING THIS EQUIPMENT

1 – 36401487

DANGER

To avoid bodily injury, read all instructions before operating or servicing lift.



Do not put hands or feet under top.



Do not work under lift without maintenance device.



Do not stand, sit or ride on lift.

2 – 36430050

SERIES 35

TM

Autoquip Corp., 1058 W. Industrial, Guthrie, OK 73044-1058 • 1-888-811-9876 www.autoquip.com

3 – 36402980

*Contains SAE 5W30 oil
for the following temperature range:
-10°F to 130°F
Other temperatures, please
consult factory.
See MSDS sheet included
with shipment.*

36400661

4 – 36400661

Autoquip CORPORATION

A SUBSIDIARY OF
MINER
ENTERPRISES INC.

P.O. Box 1058
1058 W. INDUSTRIAL
GUTHRIE, OK 73044-1058
888-811-9876
WWW.AUTOQUIP.COM.

MAXIMUM LOAD _____
MODEL NUMBER _____
SERIAL NO. _____

MAXIMUM AXLE LOAD OVER EDGES _____

36401560

5 – 36401560

Autoquip
LIFTING SOLUTIONS_{SM}

1058 W. INDUSTRIAL AVE.
GUTHRIE, OK 73044-1058
1-888-811-8876
www.autoquip.com

**,000 LBS.
CAPACITY**

36401586

6 – 36401586

Autoquip
LIFTING SOLUTIONS_{SM}

36403220

7 – 36403220

JOB NO.		MODEL NO.	
MOTOR	VOLTS	CYCLE	PHASE
CONTROL	VOLTS		
WIRE CODE			
BLACK –			
WHITE –			
RED –			
ORANGE –			
BLUE –			
GREEN –			
TO OBTAIN PROPER ROTATION ON 3 PHASE UNITS-RUN PUMP MOTOR 5 TO 10 SECONDS ONLY- IF LIFT DOES NOT RISE CHANGE ROTATION.			
PN 364-0334-3			

8 – 36403343

4. INSTALLATION

4.1 Remote Power Unit Installation

1. The remote power unit is to be located in an area protected from the elements and should be installed prior to the lift to facilitate lift operation during installation into the pit.
2. The remote contractor power unit is equipped with power unit mounting brackets and can be wall or floor mounted using these brackets. If equipped with a vertical power unit, optional power unit mounting brackets must be used for wall mounting.
3. The electrical work is to be done in accordance with local codes by a qualified electrician. See the "Maintenance" section for the standard wiring diagram.
4. If permanent electrical work is not complete, some means of temporary power with an on/off device for the motor will be required.
5. Fill the reservoir with oil per instructions in the "Maintenance" section.

4.2 Power Unit Wiring

4.2.1 Intermittent Remote Power Unit

1. The Intermittent Power Units utilize a 1-½ or 5 HP / 208-230-460 Volt / 60 hertz / 3 phase "Super-Torque" intermittent duty motor with (one full lift cycle per 2 minute period) driving a high pressure positive displacement pump assembly with an internal relief valve, check valve and down solenoid valve.
2. Because an Autoquip "Super-Torque" motor actually delivers substantially more horsepower than the nameplate rating, it must always be wired for heavier current-draw than standard motors of the same nameplate rating. However, because of the "Super-Torque" motor's starting efficiency and superior running characteristics, circuit components do not have to be as large as for standard motors of equal delivered horsepower.

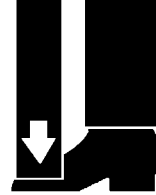
4.2.2 Heavy Duty Remote Power Unit

1. The Vertical 'HD' Power unit utilizes a 5 HP/ 208-230-460 Volt / 60 hertz / 3 phase Heavy Duty motor, (with a 30 minute continuous duty rating). The power unit is coupled with a high-pressure positive displacement gear pump, and Autoquip Corporation's patented Deltatrol valve assembly.
2. The motor connection diagram should be referenced in connecting the motors to a power source. Remember that heavy wire must be used all the way to the power source.

4.3 Pit Installation

⚠ WARNING

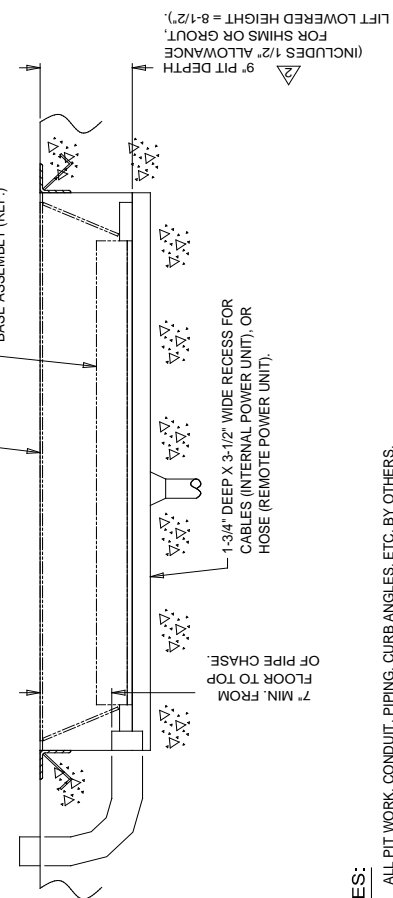
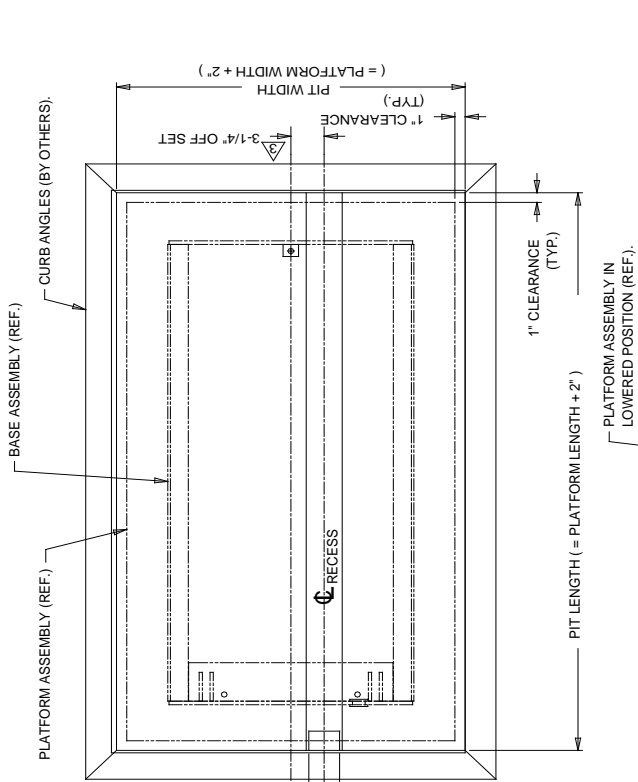
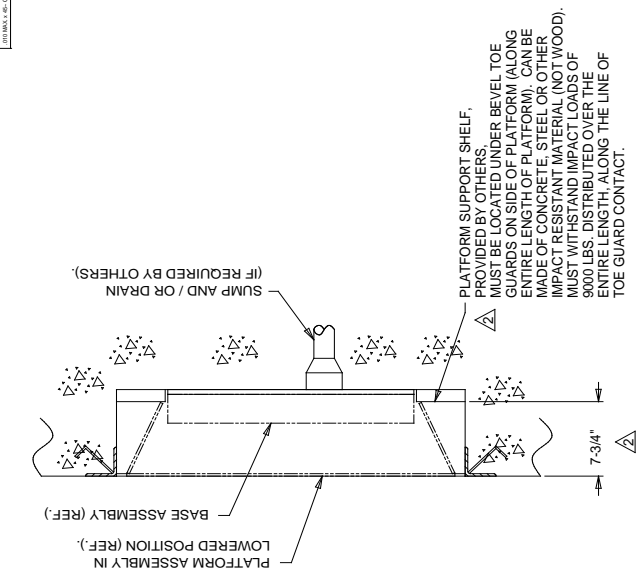
Do not install lift in a pit unless lift has a bevel toe guard or other approved toe protection. A shear point may exist which can cause severe foot injury.



Lift platforms traveling below floor levels may create a toe hazard as load passes top edge of pit. This may require guarding in accordance with ANSI MH29.1. Guarding must be installed prior to operating lift.

1. Check pit dimensions. Pit must be 2" longer and 2" wider than lift platform to allow a 1" gap between platform and pit. Pit depth should allow 1/2" for shims or grout.
2. Conduit diameter must be a minimum of 3" with long radius sweeps for necessary hydraulic hosing and field wiring.
3. Verify installation area is clean before starting. Check mounting surface of pit floor with a level or straight edge. If floor is not level, add shims or grout under entire perimeter of base to achieve a level and flat base installation. A level base is essential for proper wheel tracking and smooth lift operation.

UNLESS OTHERWISE SPECIFIED
 DIMENSIONS ARE IN INCHES
 DIMENSIONS IN PARENTHESES ARE IN METERS
 FINISHES ARE AS SHOWN
 MATERIALS AND METHODS OF CONSTRUCTION ARE AS SHOWN
 UNLESS OTHERWISE SPECIFIED



Series 35 Pit Detail
See Pit Installation Notes

- NOTES:**
1. ALL PIT WORK, CONDUIT, PIPING, CURB ANGLES, ETC. BY OTHERS.
 2. RUN 3" DIA. PVC PIPE WITH LONG RADIUS SWEEP ELBOWS TO PROVIDE PIPE CHASE FOR HOSE OR CABLES. RUN FROM PIT TO POWER UNIT OR CONTROL LOCATION.
 3. ADD PLATFORM SUPPORT SHELF TO PIT AS SHOWN ABOVE.

DATE	BY	REVISIONS	NO.	DESCRIPTION
STANDARD PIT DETAIL - SERIES 35				
APPROXIMATE WEIGHT	APPROXIMATE VOLUME	APPROXIMATE AREA	APPROXIMATE PERIMETER	APPROXIMATE HEIGHT
421	50	488	1 of 1	3
				C

⚠ WARNING

Prevent serious injury or death.

Depending on model, standard weight of lift ranges from 500 – 4700 lbs.

Use a properly rated lifting device to move and install lift.

4. Lower lift into pit and check for proper height. Lift must be solid and flush with pit curb angle framing (D). If needed, shim to desired height. DO NOT “spot” shim. Shim along full length of frame. This will prevent frame from sagging under load.
5. Remove the shipping bolt and eye bolts from the lift and hydraulically raise the platform. Failing to remove the shipping bolts before operation will cause permanent damage to the lift.

⚠ WARNING

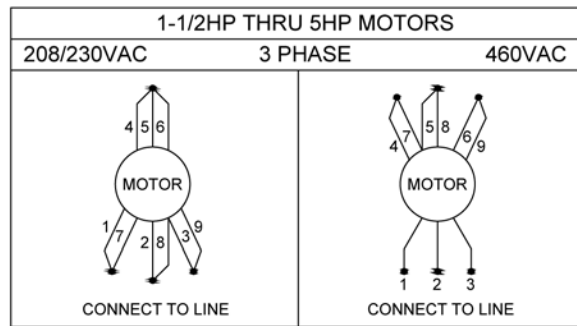
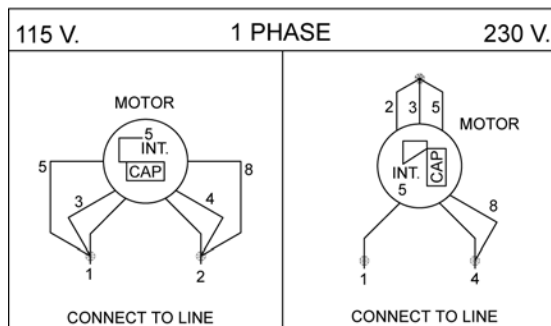
Prevent serious injury or death.

Electrical service installation must be performed by a licensed electrician and conform to all local and national electrical codes.



NOTE: For larger horsepower motors, consult factory.

Motor Details					Full Load Amps			
HP	HZ	PH	RPM	Time Rating	115V	208V	230V	460V
1/2	60	1	1725	2 Min.	15.0	7.7	7.7	-
3/4	60	1	1725	2 Min.	16.6	8.3	8.3	-
1-1/2	60	3	3450	2 Min.	-	5.3	5.3	2.65
5	60	3	3600	2 Min.	-	15.8	14.8	7.4
5	60	3	1760	Continuous	-	13.6	12.6	6.3



6. Temporarily connect electrical service and hydraulic hoses. The hose connection on the end of the base frame is 1/2" female NPT.

Hydraulic Piping/Hose Size

Up to 25 feet	1/2" ID
26 feet to 50 feet	3/4" ID
Over 50 feet	1" ID

7. Check the routing of the temporary hydraulic lines to assure that the hose is clear of legs, base frame, and platform when lift is in the lowered position.

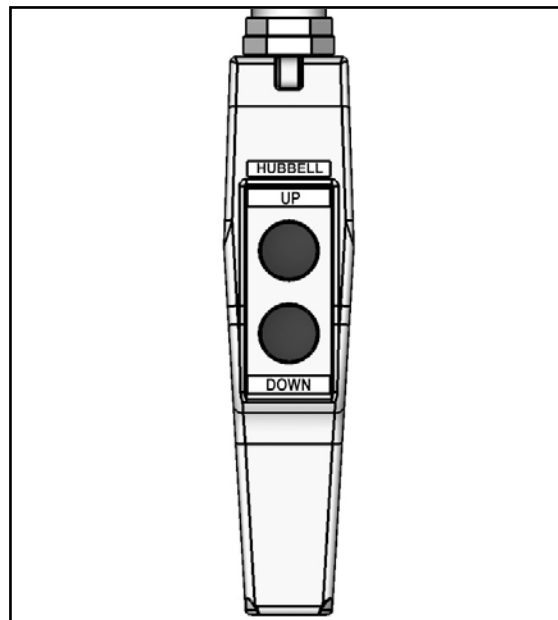
8. Fill hydraulic reservoir with proper type and volume of fluid.

9. Press "UP" button and raise lift one foot.

10. Press "DOWN" button to fully lower lift. Continue to hold down button for 60 seconds. Repeat procedure five to seven times to bleed air out of hydraulic system.

11. Raise and lower lift as needed to make positioning adjustments.

12. Adjust platform to a clearance of 1" minimum around perimeter between platform and pit angle.



⚠ WARNING

NEVER go under a raised lift platform until load is removed and lift is securely blocked in raised position with maintenance devices.

See "Maintenance Device" section of this manual.

Lock-out/tag-out power source.



13. Base frame of lift has pre-drilled holes for anchoring to the floor. Anchor lift to floor. Lifts with oversize platforms have minimum pull out requirements of 2,000 lbs. for each anchor. See "Shimming And Anchoring Lift To Concrete".

14. Make permanent electrical and hydraulic connections and operate lift through a few cycles.

15. Clean up debris and spilled oil from area. Dispose of oil in an environmentally safe manner.

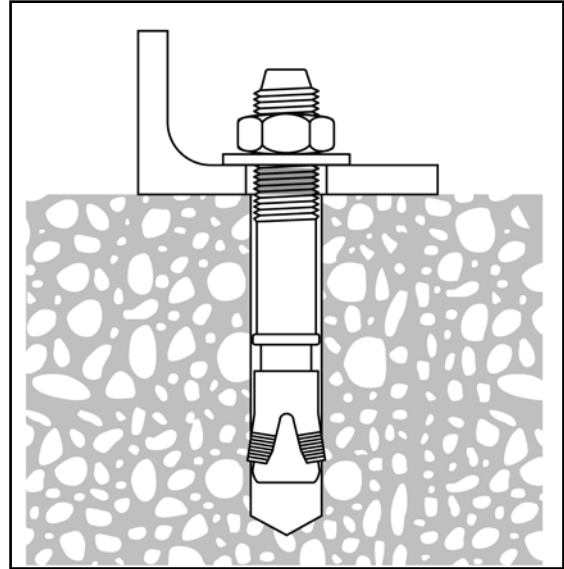
16. Touch-up paint is available from *Autoquip* for repair of damaged paint surfaces.

17. Train personnel on lift operation, all safety features and procedures.

4.4 Shimming And Anchoring Lift To Concrete

Recommended concrete anchor bolts are: HILTI “Kwik-Bolt”, Molly Parabolts or similar.

1. Verify lift is positioned correctly.
2. Drill holes in concrete as specified by anchor bolt manufacturer.
3. Install and tighten anchors as specified by anchor bolt manufacturer.
4. After lift has been aligned, leveled and shimmed, and anchors have been installed, pour grout under entire base frame.
5. When grout has set and cured, tighten nuts on anchor bolts.
6. Route hydraulic hose or electrical cord through conduit in pit wall.



4.5 Accordion Skirt Installation

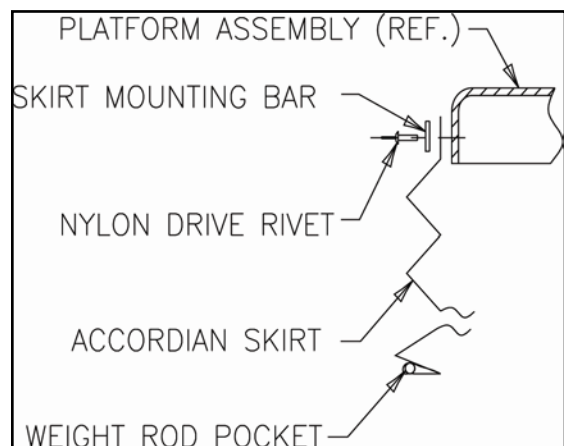
1. Position platform in raised position. Engage maintenance locks (see “Lift Blocking Instructions” section). Position accordion with weight rod pocket at bottom and mounting collar at top. The breathable material when provided must be positioned at top of skirt with mounting collar.
2. Slip skirt over end of platform. Turn skirt as required to slide over other end of platform and leg assembly. The skirt should be in position under platform while enveloping base assembly.
3. Select from the following mounting configurations.

Mounting Accordion Skirt On Platform Side

Raise one side of skirt along with a skirt-mounting bar (1/8" x 1") to (1) side of platform. When possible, center skirt-mounting collar and skirt-mounting bar (1/8" x 1") on platform side.

Align pre-drilled holes in side of platform with skirt-mounting bar holes and punch holes in skirt-mounting collar.

Push a nylon drive rivet through each hole in skirt-mounting bar. Hammer aluminum pin into rivet until flush with rivet head. Repeat mounting process for remaining sides of accordion skirt.

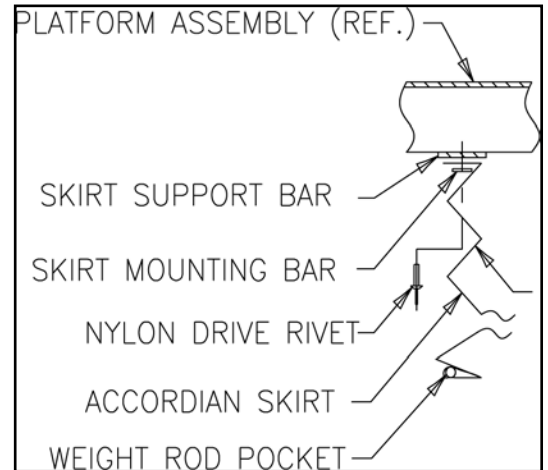


Mounting Accordion Skirt Under Platform

Raise one side of skirt along with a skirt-mounting bar (1/8" x 1") to underside of platform skirt support bar. When possible, center skirt-mounting collar and skirt-mounting bar (1/8" x 1") on platform support bar.

Align pre-drilled holes in skirt support bar with skirt-mounting bar holes and punch holes in skirt-mounting collar.

Push a nylon drive rivet through each hole in skirt-mounting bar. Hammer aluminum pin into rivet until flush with rivet head. Repeat mounting process for remaining sides of accordion skirt.

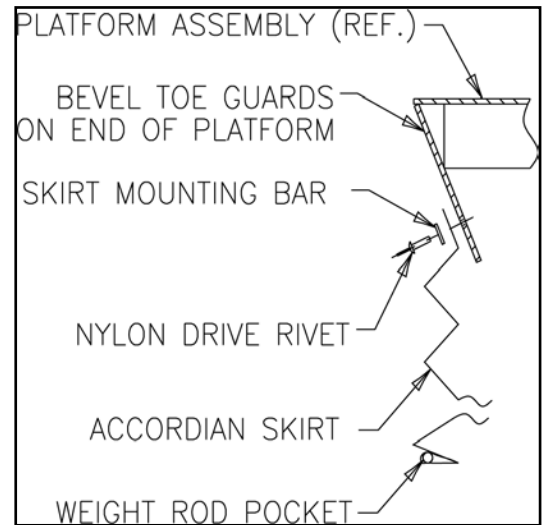


Mounting Accordion Skirt On Bevel Toe Guard

Raise one side of skirt along with a skirt-mounting bar (1/8" x 1") to side of bevel toe guard. When possible, center skirt-mounting collar and skirt-mounting bar (1/8" x 1") on platform bevel toe guard.

Align pre-drilled holes in bevel toe guard with skirt-mounting bar holes and punch holes in skirt-mounting collar.

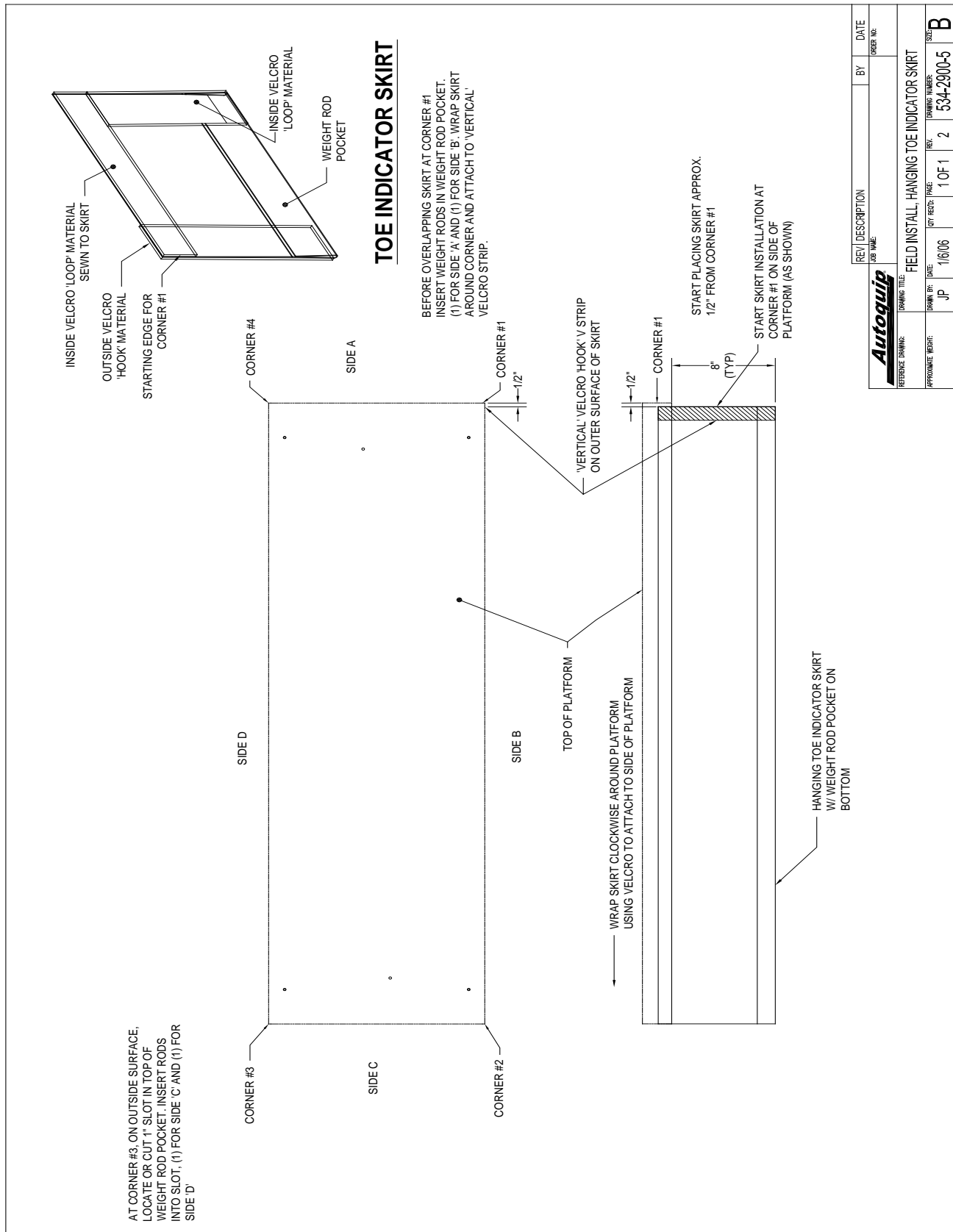
Push a nylon drive rivet through each hole in skirt-mounting bar. Hammer aluminum pin into rivet until flush with rivet head. Repeat mounting process for remaining sides of accordion skirt.



4. Install weight rods into weight rod pockets at bottom of accordion skirt. Install spring tempered wire rods into pocket of black convolutions.

4.6 Toe Indicator Skirt

1. Position the platform in the raised position. Install the maintenance locks (see “Lift Blocking Instructions”). Position the Toe Indicator skirt with the weight rod pocket at the bottom and the Internal Horizontal Velcro strip at the top. See Toe Indicator Drawing.
2. The skirt should be mounted to the platform sides to allow the skirt to extend approximately 8” below the bottom of the platform, see Toe Indicator Drawing. At the Skirt starting point, the skirt should have a Vertical Exterior Velcro strip and an Internal Horizontal Velcro strip. Use the Horizontal Velcro strip with adhesive back to attach the skirt to the platform sides, typical for all (4) platform sides. Start the skirt 1/2” from Corner #1 and wrap the Toe Indicator Skirt ‘Clockwise’ around the side of the platform. Keep the skirt smooth and tight during the clockwise installation.
3. Before overlapping the skirt at Corner #1, insert the Weight Rods into the weight rod pockets. (1) Weight Rod into Side ‘A’ pocket and (1) Weight Rod into Side ‘B’ pocket. Check the opposite ends of each weight rod to insure the weight rod is fully inserted into each weight rod pocket. Wrap the skirt around Corner #1 and attach the Vertical Interior Velcro strip on Side ‘A’ to the Vertical Exterior strip on Side ‘B’.
4. After installing the Weight Rods in Side A & Side B, we need to install Weight Rods into Side ‘C’ and ‘D’. At Corner #3, on the OUTSIDE surface cut a 1” (max.) Vertical slot in the TOP of the weight rod pocket. Insert weight rods in this slot, (1) for Side ‘C’ and (1) for Side ‘D’. The un-cut portion of the weight rod pocket will retain the weight rods.



Toe Indicator Skirt Installation

5. OPERATION

5.1 Raise And Lower Lift

⚠ WARNING

Prevent serious injury or death.

Before operating lift, all personnel interacting with lift must read, understand and follow instructions and safety warnings in this manual.

NOTICE

Adjusting safety relief valve may result in premature motor failure.

Do not adjust safety relief valve.

Raising loads exceeding rated capacity of lift may result in excessive wear and damage to lift.

⚠ WARNING

Prevent serious injury or death.

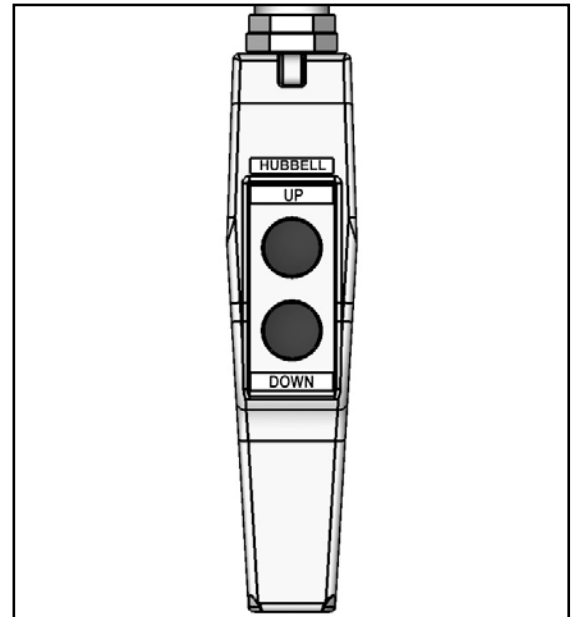
Personnel must maintain a safe operating distance of at least 36" any time lift is operated.

1. Verify all personnel are away from lift.
2. Press "UP" button to raise lift. Release button when lift reaches desired position.

NOTICE

Do not operate lift on relief for more than a few seconds. When on relief, valve will make a squealing sound.

3. Press "DOWN" button to lower lift. Release button when lift reaches desired position.
4. For lifts supplied with throw-over bridges, make sure bridges are in the stored (raised) position prior to raising or lowering the lift, and when backing up trucks for loading/unloading - to ensure that the bridges will clear all possible obstructions and contact with a moving truck.



Note: Bridges that hang below 45 degrees are in violation of ANSI Standard MH29.1-2012 paragraph 4.12.2 which states "When a hinged bridge is in its fully lowered position and not resting on a truck bed or landing, it should hang down at an angle not to exceed approximately 45 degrees from horizontal...." Autoquip's standard is to allow 20° of drop below horizontal.

6. MAINTENANCE

6.1 Maintenance Device

⚠ WARNING

NEVER go under a raised lift platform until load is removed and lift is securely blocked in raised position with maintenance device.

Lock-out/tag-out power source.



This procedure describes the only factory-approved method of working under a lift. Follow these instructions **EVERY** time you plan to reach or crawl beneath the lift to perform service or maintenance – no matter how momentary that might be.

If the factory-provided maintenance device is damaged or missing, stop immediately and consult the factory for assistance. The manufacturer is not liable for your failure to use the approved maintenance leg and procedures that have been provided.

1. All loads must be removed from the lift prior to engaging the maintenance devices. These devices are designed to support an unloaded lift only. Failure to remove the load from the lift prior to blocking could cause the failure of the maintenance devices and allow the lift to fall unexpectedly. This can result in personal injury or death.
2. Raise the lift to its fully raised position. If you do not, the maintenance devices may not be able to be placed properly in their designed blocking position.
3. The lift will be provided with two (2) maintenance devices stored on the outside of the base frame. The devices must be securely placed inside the base frame (B) and thus in the roller path of the lift **(See Figure 6.1 or 6.2)**.

A - Maintenance Devices Disengaged
B - Maintenance Devices Engaged
4. Lower the lift platform until the leg rollers or platform make contact with both maintenance device(s). Re-check to ensure that both device(s) are fully and properly engaged. If the maintenance device(s) is/are not fully engaged the lift could fall unexpectedly.

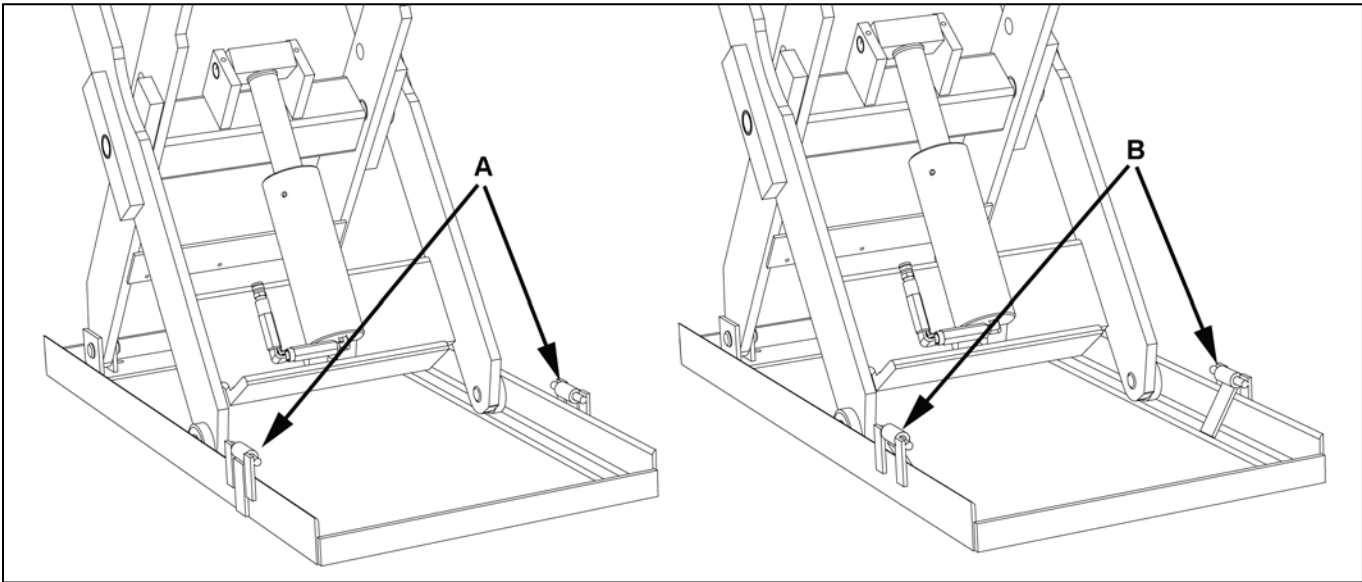


Figure 6.1

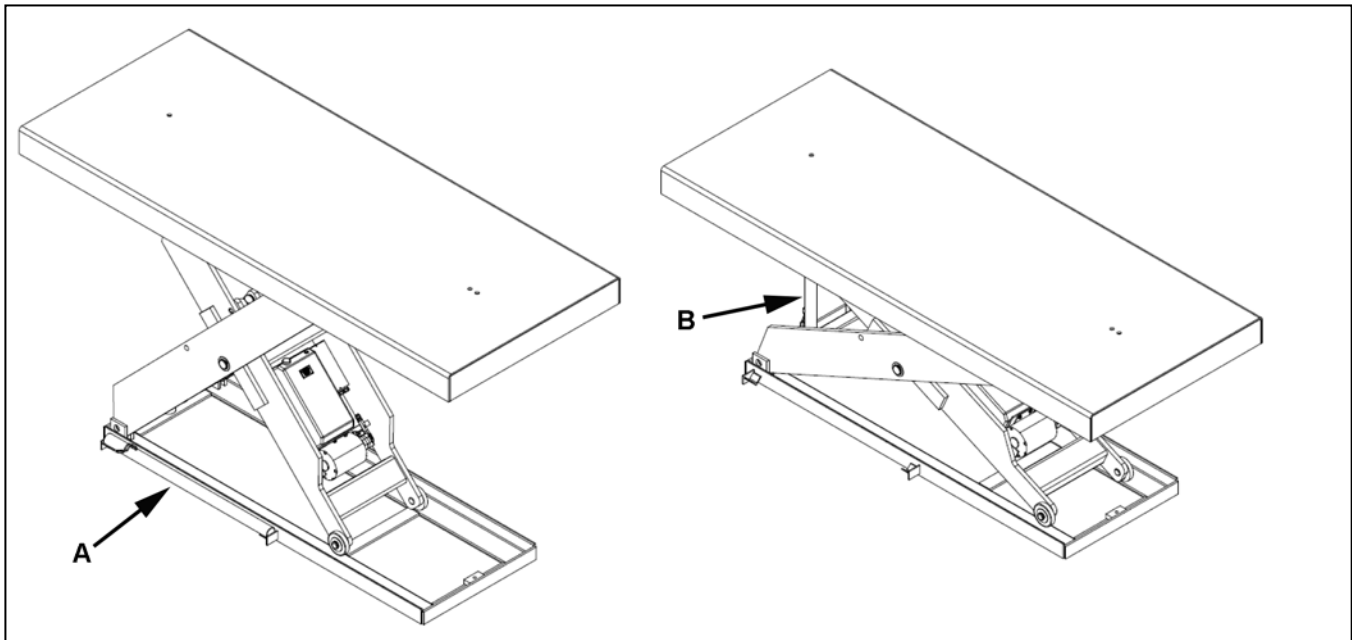


Figure 6.2

⚠ DANGER

If for any reason you are unable to lower the lift completely onto the maintenance devices, stop immediately and consult the factory. Failure to properly use the factory approved maintenance devices could result in severe injury or death.

5. Once the maintenance devices are properly and securely engaged, continue to press the down button, valve or switch for an additional 5-10 seconds to relieve all pressure in the hydraulic system (it could take longer in a pneumatic system).

⚠ WARNING

Failure to relieve operating system pressure could result in the sudden and unexpected release of high-pressure fluids (or air) during maintenance and/or repair of the lift, resulting in severe injury or death.

6. Follow OSHA electrical lock-out/tag-out procedures. Disconnect and tag all electrical and/or other power sources to prevent an unplanned or unexpected actuation of the lift.
7. Once inspection or work is complete, reverse the performance of the steps above to raise the lift off the maintenance locks and place the locks back into the designated storage position.

⚠ DANGER

HIGH VOLTAGE!! – Disconnect and/or lock out the electrical supply to the power unit per OSHA regulations prior to any installation or maintenance being performed.

6.2 Routine Maintenance

⚠ WARNING

Prevent serious injury or death.

Lock-out/tag-out power source prior to any maintenance being performed.

⚠ WARNING

Prevent serious injury or death.

Never go under lift platform until load is removed and scissors mechanism is securely blocked in raised position with maintenance devices.

See Maintenance Devices section.

⚠ WARNING

Pressurized fluids can penetrate the skin.

Hydraulic hoses can fail from age, damage and exposure.

Do not search for hydraulic leaks without body and face protection. A tiny, almost invisible leak can penetrate the skin, requiring immediate medical attention.

Use wood or cardboard to detect hydraulic leaks, never your hands.



⚠ WARNING

Spilled hydraulic fluid is slippery and may also present a fire hazard.

Clean up spilled hydraulic fluid.



Normally, scissor lifts will require very little maintenance. However, a routine maintenance program could prevent costly replacement of parts and/or downtime.

6.2.1 Every Day Or 10 Hours Of Operation

- Check reservoir fluid level.
- Check for fluid leaks.
- Check all hoses and electrical cords for cracks, abrasions, twisting, etc. Small leaks at connections can be remedied by tightening connections or replacing faulty component.
- Check that oil pressure does not exceed 3,000 psi.
- Check all pivot joints & roller bearings for noise and wear.
- Check overall condition of unit (i.e. bends, breaks, loose or missing screws, etc.).

6.2.2 Every Month Or 100 Hours Of Operation

- Check quality of oil. Replace if discolored (oxidized), cloudy, or otherwise contaminated. Do not overfill reservoir. Always use clean fluid.
- Inspect lift cylinder rods for scoring and leaking, wipe away any foreign material.
- Inspect all structural and mechanical components for cracked, or broken welds and any distortion caused by collision, overloading, or other misuse.
- Inspect snap rings/bolts at rollers & pivot points for proper retention & tightness.
- Inspect cylinder trunion pin for proper retention.

When all checks have been completed, start unit and operate through all functions. Inspect all components for signs of noise, vibration, erratic movement, and any other abnormal behavior.

6.2.3 Every Year Or 1000 Hours Of Operation

- Change oil and clean reservoir. Always use clean fluid. Never return fluid from drip pans, pit, etc. back to reservoir. Dispose of and handle used fluid as a hazardous material.
- If noise or vibration has been noticed, remove lift cylinder pins, pivot pins, and roller bearings. Inspect for wear and replace as necessary.
- Inspect all hydraulic hoses, replace any that show signs of wear or leaking.
- Replace all filters.
- Check for permanent mechanical deformation.

6.2.4 Oil Requirements

Follow recommendations below that apply to your application.

Environment (Ambient Temperature)	Recommended Oil
Indoor locations with variable temperatures: 30 - 100 degrees F.	5W 30 or 5W 40 Multiviscosity Motor Oil
Indoor locations with constant temperatures: 60 - 80 degrees F.	SAE 20 Motor Oil
Outdoor locations: 30 - 120 degrees F.	5W 30 or 5W 40 Multiviscosity Motor Oil
Outdoor locations: 10 degrees F below 0 to 100 degrees F.	5W 20 or 5W 30 Multiviscosity Motor Oil
Cold Storage Warehouse: 10 - 40 degrees F.	Contact local <i>Autoquip</i> Service Rep.

Note: All oils are detergent type.

Note: Oil level should be 1" to 1-1/2" below the top of the reservoir.

6.2.5 Oil Capacity

Standard Series 35 Polyethylene Tank: Approximately 1.25 gal.

Series 35: 48S80 & 60Sxx Tube Tank: Approximately 2 gal.

Contractor polyethylene Tank: Approximately: 5.5 gal.

Vertical Steel Tank: Approximately: 10 gal.

NOTICE

Use approved fluids only. Use of unauthorized fluids may cause damage to seals and hosing.

Do Not Use:

- Automatic Transmission Fluid (ATF)
- Hydraulic Jack Oil
- Brake Fluids

6.3 General Maintenance

6.3.1 Hydraulic Cylinder Repair

6.3.1.1. Cylinder Plunger Removal

1. Raise lift to its full height and engage maintenance devices. See “Maintenance Devices”.
2. Disconnect electrical power to lift. Follow lock out-tag out procedure.
3. Disconnect cylinder hose at power unit end and insert into reservoir oil-fill hole.
4. Loosen the setscrew or hex bolt in the cylinder upper leg clevis (otherwise known as the Trunnion clevis).
5. Remove the cylinder pin from the upper leg clevis.
6. Lift the cylinder out of the leg assembly.
7. Push the piston rod into the cylinder to eject as much oil as possible into a container.

6.3.1.2. Replace Cylinder Seals

1. Insert spanner wrench and turn upper bearing assembly clockwise until tip of retainer appears in slot. Place a small screwdriver under retainer and turn retainer to remove.
2. Be sure hose port is open to allow air into cylinder. Pull piston rod out to remove upper bearing.
3. After all internal components have been removed, inspect inner walls of barrel. Use a cylinder hone to remove any apparent nicks or scratches. Clean and flush barrel after honing.
4. Remove piston head nut from rod. Upper clevis and pin may be used to prevent rotation of rod while loosening. Remove old piston.
5. Inspect groove for nicks or scratches that could affect seal or barrel walls; remove as necessary.
6. Install new piston, seals, and rod wiper.
7. Install and tighten piston head nut to 600-650 ft•lb of torque on 3½ inch bore cylinders or 850-950 ft•lb on 4 inch bore cylinders. Upper clevis and pin may be used to prevent rotation of rod while tightening.
8. Liberally lubricate piston and seal with clean grease or oil.
9. Insert piston into barrel, taking care not to damage seal.
10. Slip bearing assembly into place and align retainer hole with slot in barrel.
11. Turn bearing with spanner wrench until retainer is reinserted completely.

6.3.1.3. Placing Cylinder Back Into Service

Loctite PST #567 pipe thread sealant or equivalent is recommended.

NOTICE

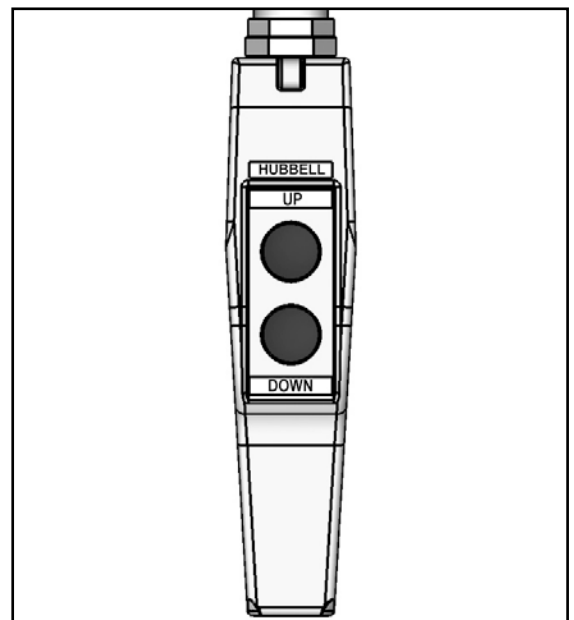
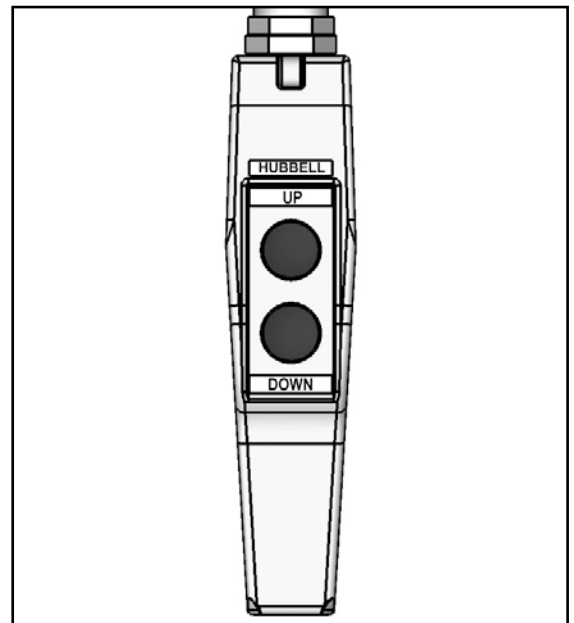
Do not use Teflon tape on hydraulic threaded connections. Tape fragments may damage hydraulic system.

Autoquip recommends replacing any NPT fittings that have been disassembled due to their inherent design for sealing.

1. Check that lift anchors are tight (when used). Check all pins and other mechanical and hydraulic connections.
2. Restore oil level. See oil recommendations in “Oil Requirements” section.
3. Turn on electrical power and press “UP” button. Loosen bleeder plug at the top end of ram casing and operate pump to remove trapped air from ram. When clear oil appears, tighten plug and raise lift slightly to disengage maintenance locks.
4. Lower lift completely and hold “DOWN” button for 60 seconds to allow air in cylinders to bleed back into reservoir.
5. Raise lift to 25 – 50% of full travel, then lower and hold “DOWN” button for an additional 60 seconds. Repeat procedure 8 – 10 times.
6. Clean oil fill breather cap.

6.3.2 Bleeding Air From System

1. Bleed air from system by raising lift to 25-50% of full travel, then lower completely.
2. Hold “DOWN” button for 60 seconds.
3. Repeat procedure 8-10 times. If this does not bleed all air from system, contact Autoquip.
4. Clean up any spilled oil. Dispose of spilled oil in an environmentally safe manner.



6.3.3 Hydraulic Velocity Fuse (HVF) Replacement

⚠ WARNING

Prevent serious injury or death.

Never go under lift platform until load is removed and scissors mechanism is securely blocked in raised position with maintenance devices and hydraulic pressure is relieved.

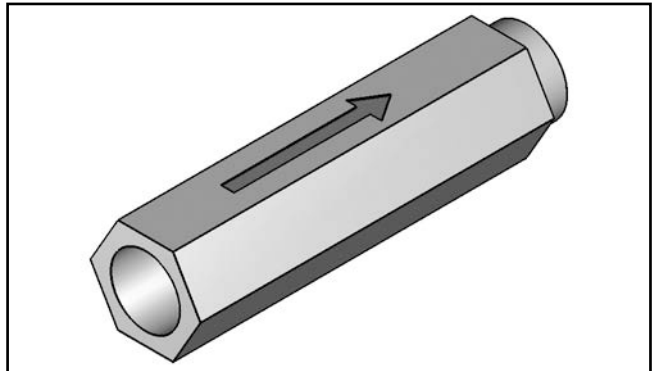
The HVF is attached to elbow fitting in rod port of cylinder. Do not use a swivel fitting between HVF and cylinder. If HVF is installed improperly, it will not lock up in the event of a hydraulic line failure.

Velocity fuse is not repairable. Replace velocity fuse if defective.

1. Arrow on hydraulic velocity fuse indicates direction of oil flow restriction. Hydraulic velocity fuse must be installed with arrow pointing away from cylinder.

NOTICE

Do not use Teflon tape on hydraulic threaded connections. Tape fragments may damage hydraulic system.



2. Apply Loctite PST #567 pipe thread sealant or equivalent to threads and install fuse to cylinder with arrow pointing away from cylinder. Tighten fuse.

Autoquip recommends replacing any NPT fittings that have been disassembled due to their inherent design for sealing.

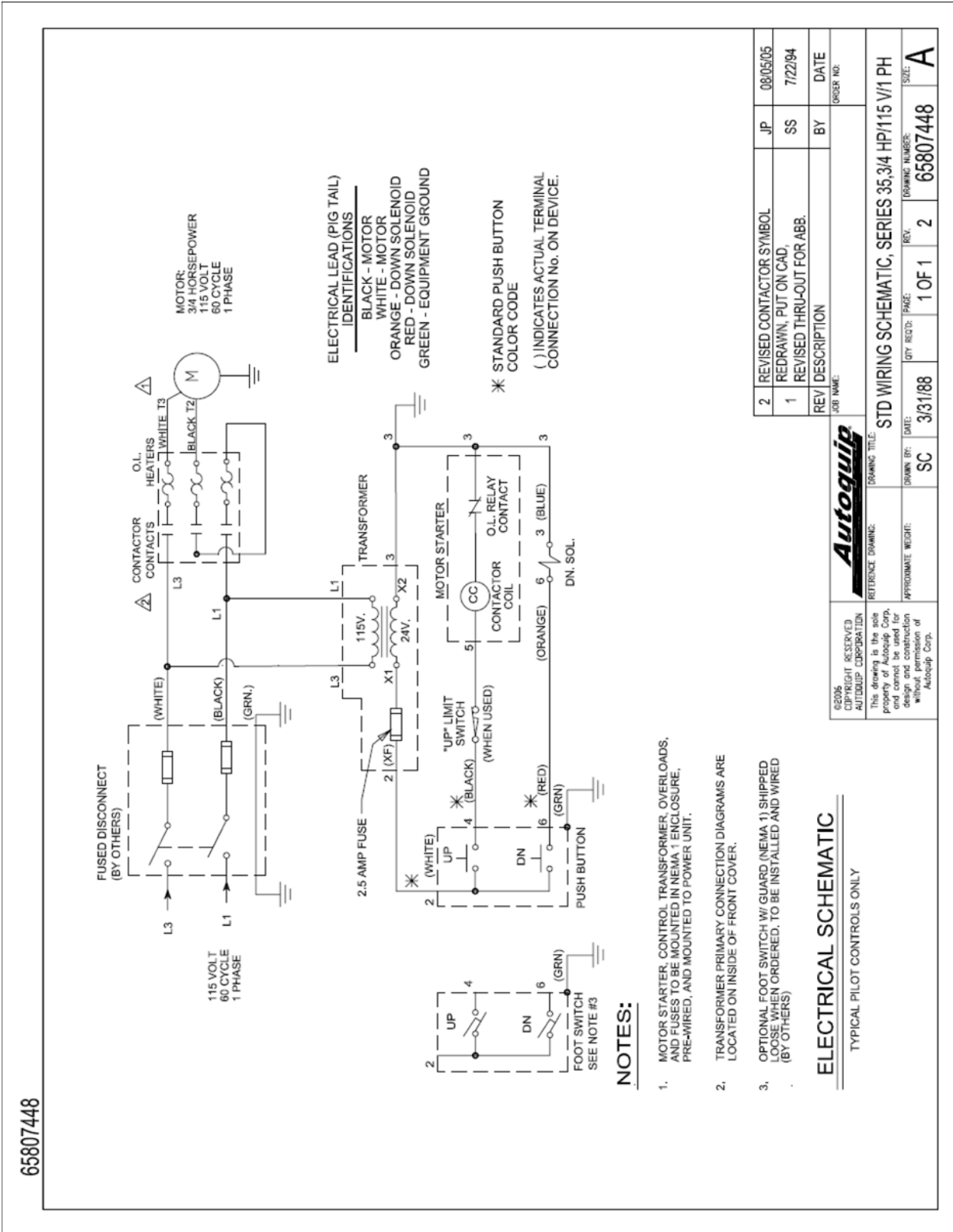
3. Fill reservoir to full mark if necessary with proper oil.
4. Check all fitting connections for hydraulic leaks and tighten as necessary.
5. Bleed air from system. See “Bleeding Air From System” in this section.

6.3.4 Hose Orientation

To prevent damage to cylinder hoses, it is necessary to establish a correct hose shape and pattern of movement as follows:

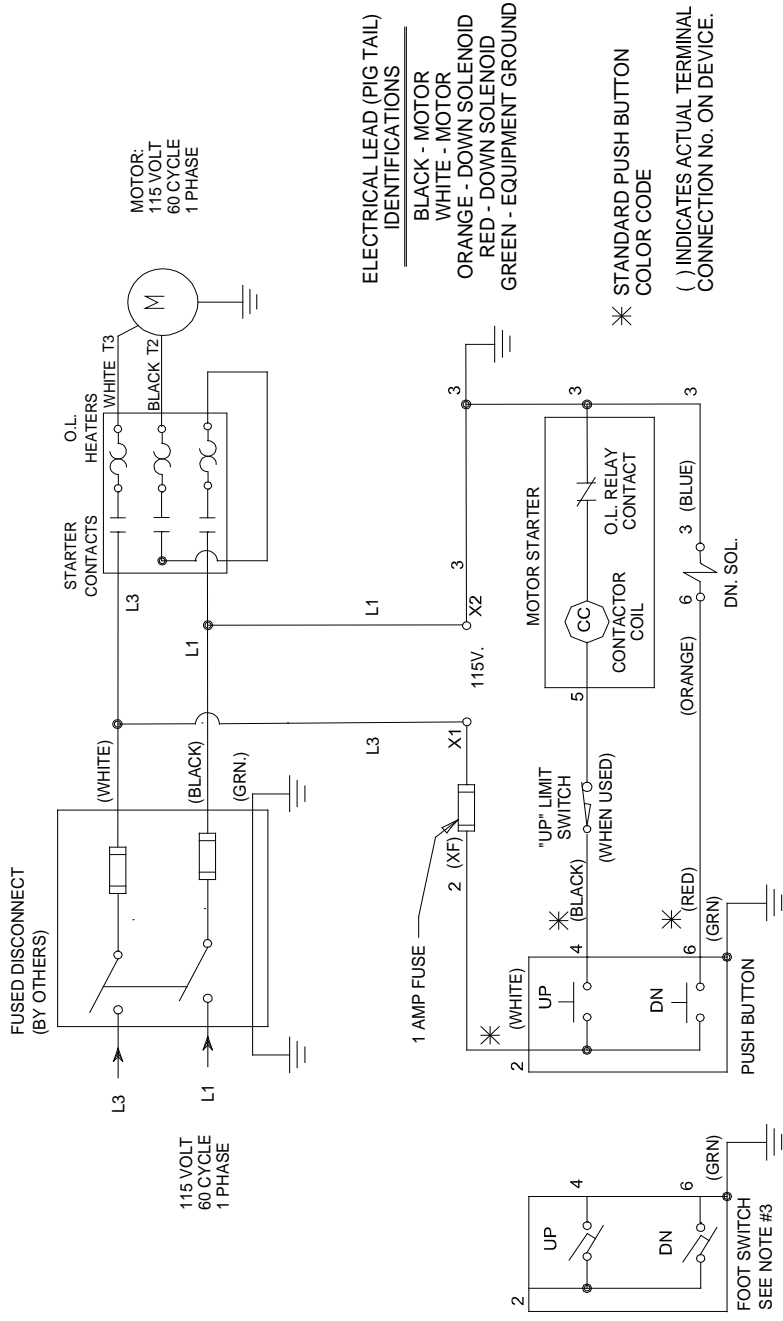
1. Raise lift to its full height and block securely. See “Maintenance Devices”.
2. Install one end of new hose to cylinder fitting.
3. Since hose is fixed at both ends, it is possible to put a twist in hose that will allow it to follow the same pattern each time lift is operated. This twist will allow hose to travel about half way between cylinder on right side and inner leg on right side.
4. Lower lift carefully and verify hose is free and clear of cylinder and inner leg assembly. If not, twist hose in direction necessary to clear any obstruction and tighten swivel fitting.

6.3.5 Schematics and Field Wiring Details



Electric Schematic; 115V / 1 Phase /24V Control

65750500



ELECTRICAL LEAD (PIG TAIL) IDENTIFICATIONS
 BLACK - MOTOR
 WHITE - MOTOR
 ORANGE - DOWN SOLENOID
 RED - DOWN SOLENOID
 GREEN - EQUIPMENT GROUND


* STANDARD PUSH BUTTON COLOR CODE
 () INDICATES ACTUAL TERMINAL CONNECTION No. ON DEVICE.

NOTES:

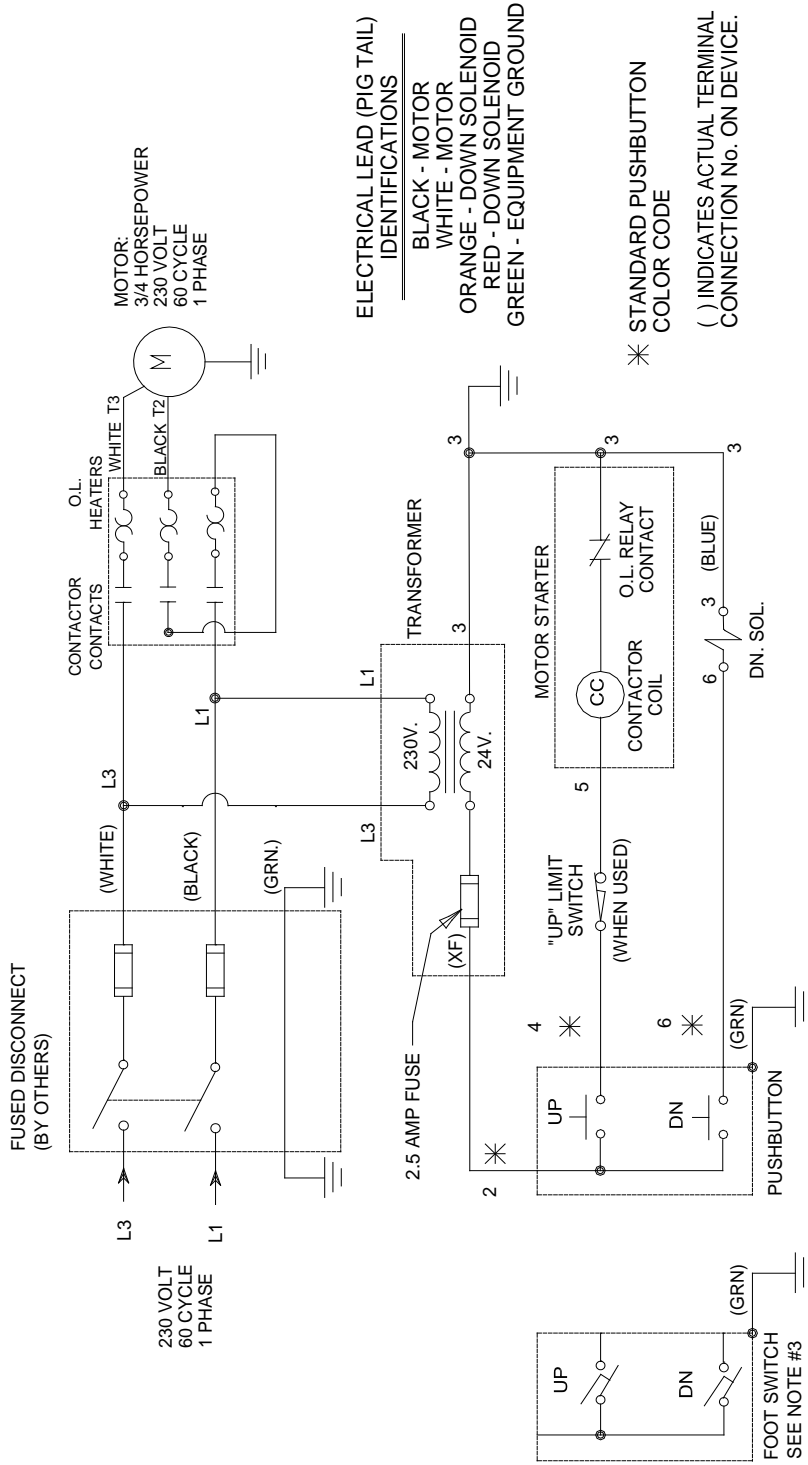
1. MOTOR STARTER, OVERLOADS AND FUSES TO BE MOUNTED IN NEMA 1 ENCLOSURE, AND INTERNALLY PRE-WIRED.
2. WIRING DIAGRAM IS LOCATED ON INSIDE OF FRONT COVER.
3. OPTIONAL FOOT SWITCH W/ GUARD (NEMA 1) SHIPPED LOOSE WHEN ORDERED. TO BE INSTALLED AND WIRED (BY OTHERS)

ELECTRICAL SCHEMATIC

TYPICAL PILOT CONTROLS ONLY

©2004 COPYRIGHT RESERVED AUTOQUIP CORPORATION				REV	DESCRIPTION	BY	DATE
This drawing is the sole property of Autoquip Corp. and cannot be used for design and construction without permission of Autoquip Corp.		REFERENCE DRAWING: 65807448		JOB NAME: ELECT SCH, SERIES 35; 115V/ 1PH/ 115CV			
APPROXIMATE WEIGHT: ME		DRAWN BY: ME		QTY RECD: PAGE: 1 OF 1		DRAWING NUMBER: 65750500	
		DATE: 1/4/05				SIZE: A	

65807430



NOTES:

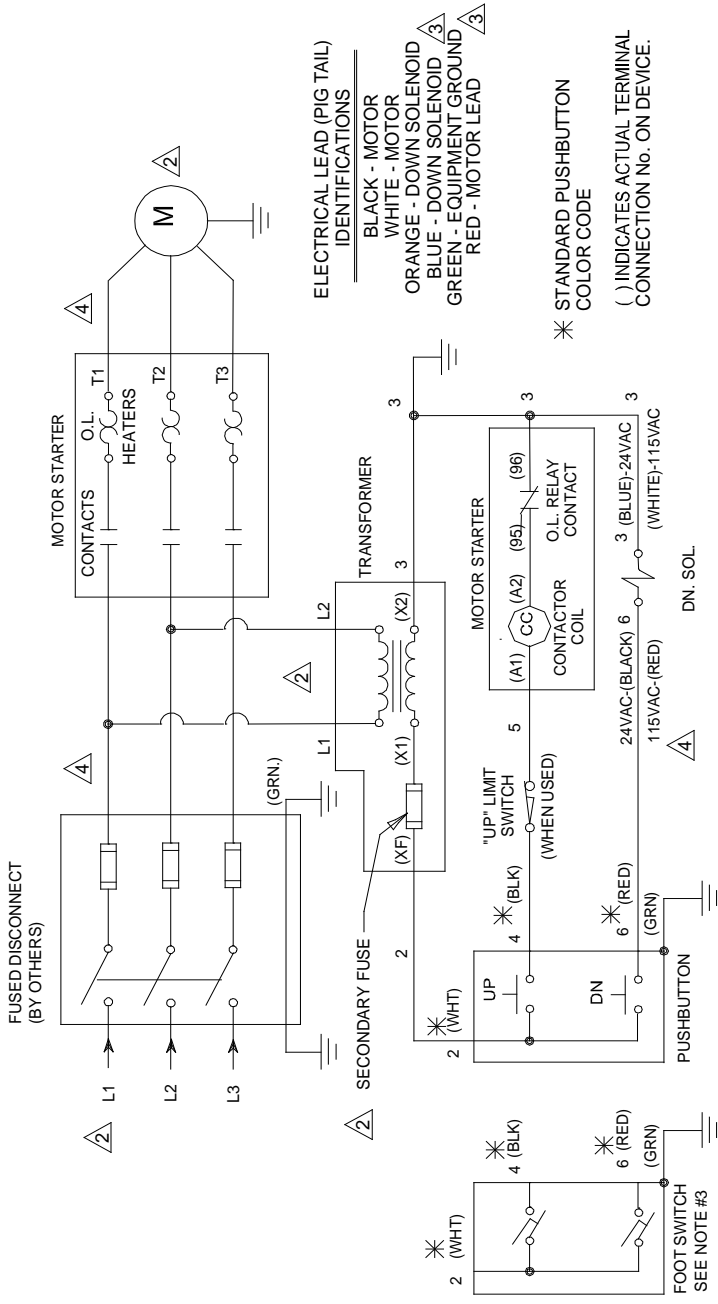
1. MOTOR STARTER, CONTROL TRANSFORMER, OVERLOADS, AND FUSES TO BE MOUNTED IN NEMA 1 ENCLOSURE, PRE-WIRED, AND MOUNTED TO POWER UNIT.
2. TRANSFORMER PRIMARY CONNECTION DIAGRAMS ARE LOCATED ON INSIDE OF FRONT COVER.
3. OPTIONAL FOOTSWITCH W/ GUARD (NEMA 1) SHIPPED LOOSE WHEN ORDERED. TO BE INSTALLED AND WIRED (BY OTHERS)

ELECTRICAL SCHEMATIC

TYPICAL PILOT CONTROLS ONLY

		REV / DESCRIPTION	BY	DATE
<small>©2005 COPYRIGHT RESERVED AUTOQUIP CORPORATION</small> <small>This drawing is the sole property of Autoquip Corp. and cannot be used for design and construction without permission of Autoquip Corp.</small>		JOB NAME:		
REFERENCE DRAWING:	DRAWING TITLE:	STD WIRING SCHEMATIC, SERIES 35, 3/4 HP/230 V/1 PH		
APPROXIMATE WEIGHT:	DRAWN BY:	DATE:	REV.	DRAWING NUMBER:
	SC	3/31/88	1 OF 1 2	65807430
				SIZE: A

65807422



ELECTRICAL LEAD (PIG TAIL) IDENTIFICATIONS
 BLACK - MOTOR
 WHITE - MOTOR
 ORANGE - DOWN SOLENOID
 BLUE - DOWN SOLENOID
 GREEN - EQUIPMENT GROUND
 RED - MOTOR LEAD

* STANDARD PUSHBUTTON COLOR CODE

() INDICATES ACTUAL TERMINAL CONNECTION No. ON DEVICE.

NOTES:

1. MOTOR STARTER, CONTROL TRANSFORMER, HEATERS, AND FUSES TO BE MOUNTED IN NEMA 1 ENCLOSURE, AND PRE-WIRED TO POWER UNIT.
2. TRANSFORMER PRIMARY CONNECTION DIAGRAMS ARE LOCATED ON INSIDE OF FRONT COVER.
3. FOOTSWITCH IS SHIPPED LOOSE FOR INSTALLATION BY OTHERS (WHEN ORDERED).

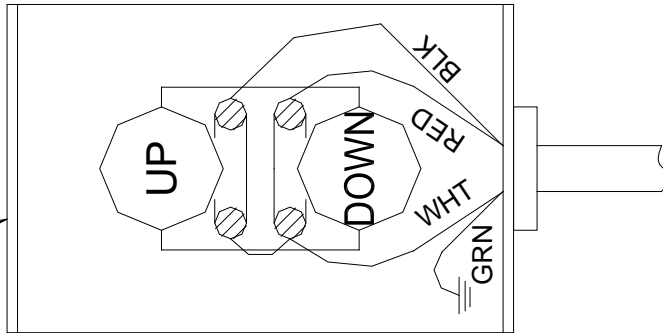
ELECTRICAL SCHEMATIC

TYPICAL PILOT CONTROLS ONLY

	REV	DESCRIPTION	BY	DATE
	JOB NAME:			
©2005 COPYRIGHT RESERVED AUTOQUIP CORPORATION This drawing is the sole property of Autquip Corp. and cannot be used for design or construction without permission of Autquip Corp.	REFERENCE DRAWING:	DRAWING TITLE:	STANDARD WIRING SCHEMATIC, SERIES 35	
APPROXIMATE WEIGHT:	SC	DRAWN BY:	DATE:	3/30/88
QTY REQ'D:	1 OF 1	REV:	DRAWING NUMBER:	65807422
PAGE:	4	REV:	DRAWING NUMBER:	65807422
SIZE:	A			

658-0734-9

STANDARD WALL MOUNT PUSHBUTTON SWITCH
(FRONT VIEW, COVER REMOVED)

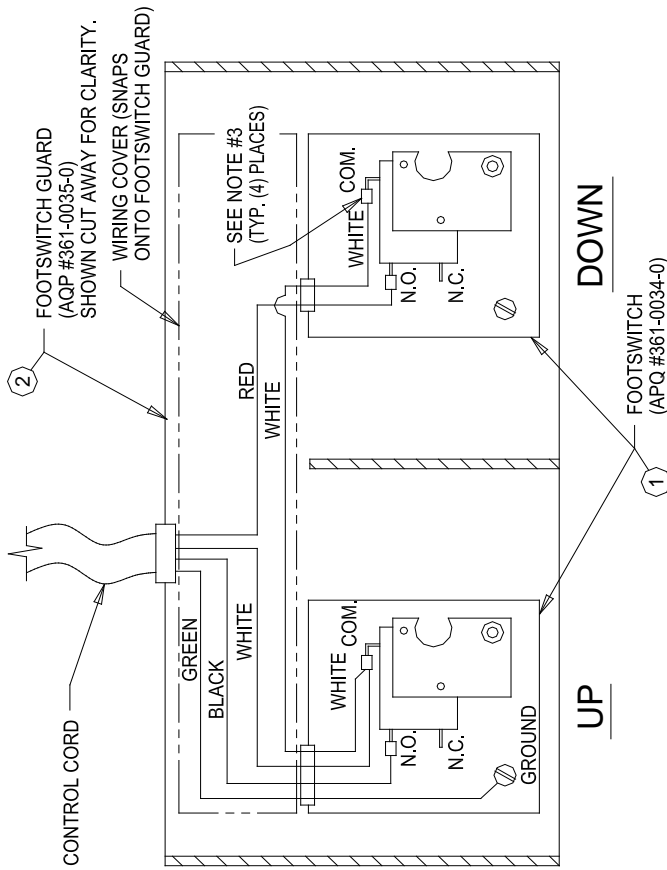


NOTES:

1. WARNING: ELECTRICAL HAZARD
DISCONNECT POWER BEFORE
WIRING THIS ACCESSORY.
2. COLOR CODING SHOWN CORRESPONDS TO
EXISTING 16/4 SO CONTROL CORD ON
LIFT.
3. USE APPROPRIATE WIRE, CONDUIT, ETC.
TO SATISFY LOCAL CODES. (BY OTHERS.)

©2005 COPYRIGHT RESERVED AUTOQUIP CORPORATION This drawing is the sole property of Autoquip Corp. and cannot be used for design and construction without permission of Autoquip Corp.	Autoquip REFERENCE DRAWING:		DRAWING TITLE: STD WALL MOUNT PUSHBUTTON WIRING DIAGRAM	DRAWN BY: SC	DATE: 3/23/88	QTY REQD: 1 OF 1	REV. 2	DRAWING NUMBER: 658-0734-9	ORDER NO.: A
	APPROXIMATE WEIGHT: <2T		REV. DESCRIPTION JOB NAME:	BY	DATE				

Optional Wall Mount Push Button Wiring Diagram



NOTES:

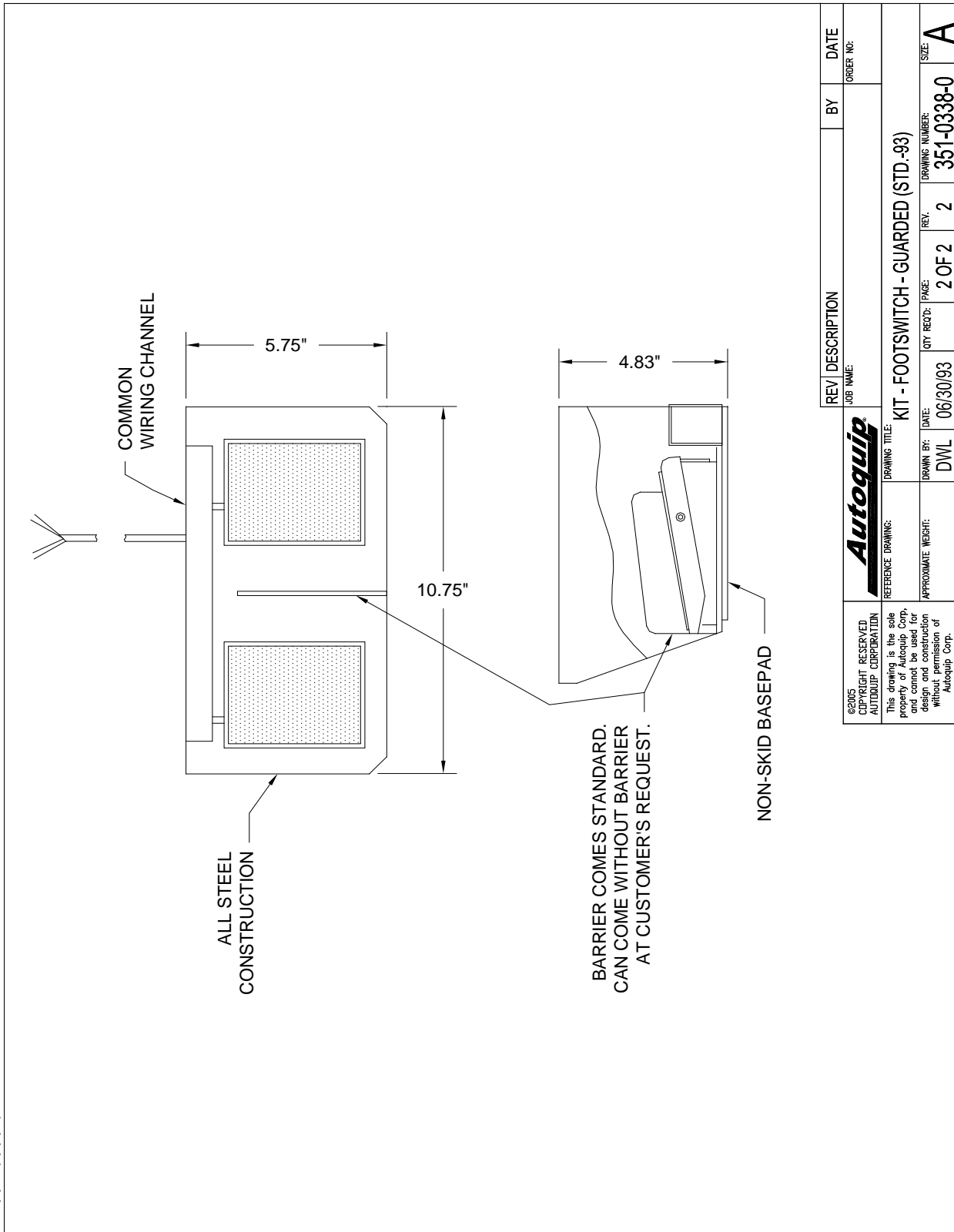
1. **WARNING: ELECTRICAL HAZARD.**
DISCONNECT POWER BEFORE WIRING THIS ACCESSORY.
2. COLOR CODING SHOWN CORRESPONDS TO EXISTING 16/4 SO CONTROL CORD ON LIFT.
3. USE 3/16" WIRE TABS FOR WIRING FOOTSWITCH.
4. EXCHANGE BLACK AND RED WIRES IF DESIRED TO SWITCH "UP" AND "DOWN" FUNCTIONS.
5. USE APPROPRIATE WIRE, CONDUIT, ETC. TO SATISFY LOCAL CODES (BY OTHERS).
6. INSTALL FOOTSWITCH GUARD PER MANUFACTURER'S INSTRUCTIONS.
7. INSTALLER TO APPLY "UP" AND "DOWN" LABELS TO TOP OF COVER AS REQUIRED.
8. ELECTRICAL RATING WITHOUT CORD 15 AMP, 115/230VAC
9. FOOT GUARD PAINTED YELLOW

**STANDARD FOOTSWITCH ASSEMBLY
(TOP VIEW WITH TOP COVERS OF FOOTSWITCHES REMOVED)**

Optional Guarded Foot Switch Wiring Diagram

©2015 COPYRIGHT RESERVED AUTOQUIP CORPORATION This drawing is the sole property of Autoquip Corp. and cannot be used for design and construction without permission of Autoquip Corp.	REFERENCE DRAWING:	DRAWING TITLE:	REV DESCRIPTION	BY	DATE
	APPROXIMATE WEIGHT:	DRAWN BY:	JOB NAME:	ORDER NO:	ORDER NO:
APPROXIMATE WEIGHT:	DATE:	QTY REQ'D:	REV.	DRAWING NUMBER:	SIZE:
APPROXIMATE WEIGHT:	DWL	06/30/93	1 OF 2	2	351-0338-0
APPROXIMATE WEIGHT:	DWL	06/30/93	1 OF 2	2	A

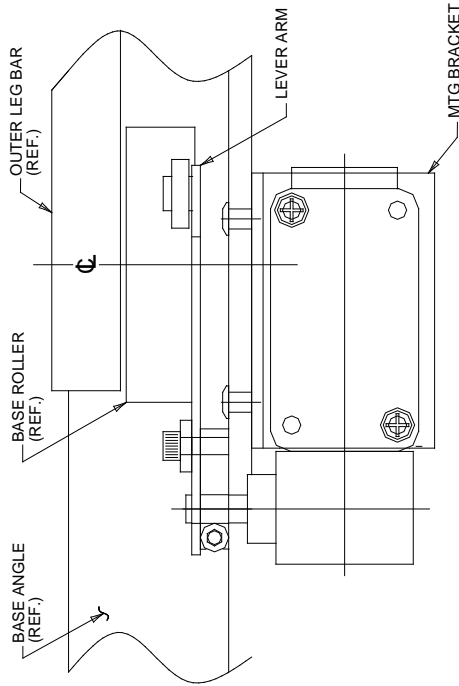
351-0338-0



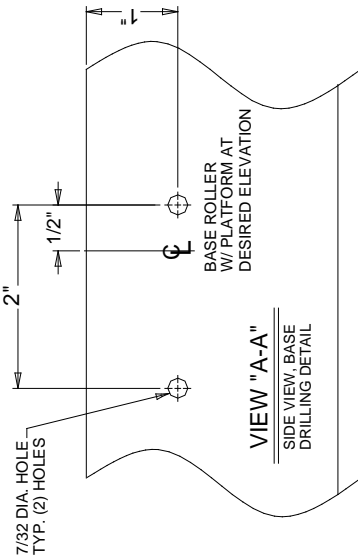
Guarded Foot Switch Assembly

©2005 COPYRIGHT RESERVED AUTOQUIP CORPORATION This drawing is the sole property of Autoquip Corp. and cannot be used or reproduced in any form without permission of Autoquip Corp.	Autoquip REFERENCE DRAWING:	JOB NAME:	REV DESCRIPTION	BY	DATE
	DRAWING TITLE: KIT - FOOTSWITCH - GUARDED (STD-93)	ORDER NO:	QTY REQD:	REV:	DRAWING NUMBER:
APPROXIMATE WEIGHT:	DRAWN BY:	DATE:	PAGE:	REV:	DRAWING NUMBER:
DWL	06/30/93	2 OF 2	2	351-0338-0	A

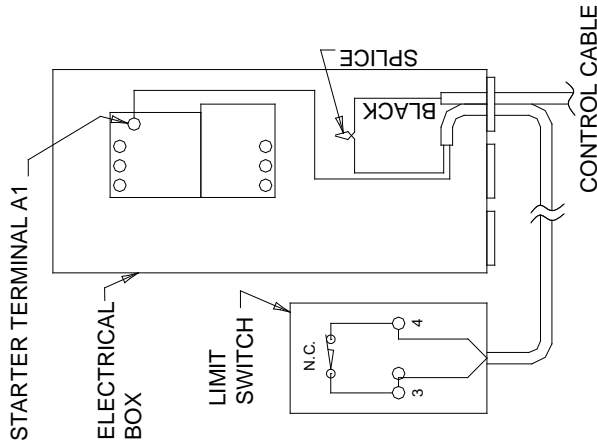
60401106



TOP VIEW
STANDARD END MOUNT



VIEW "A-A"
SIDE VIEW, BASE
DRILLING DETAIL



WIRING DETAIL

NOTES:

WIRING:

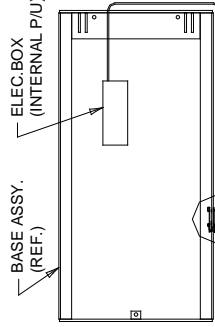
1. WARNING: ELECTRICAL HAZARD. DISCONNECT POWER BEFORE WIRING THIS ACCESSORY.
2. USE APPROPRIATE WIRE, CONDUIT, ETC. TO SATISFY LOCAL CODES, (BY OTHERS.)
3. DISCONNECT EXISTING BLACK CONTROL CABLE WIRE FROM TERMINAL "A1" OF THE MAGNETIC STARTER IN THE ELECTRICAL BOX. SPLICE TO THIS WIRE AND CONNECT TO TERMINAL "3" OF THE LIMIT SWITCH. WIRE TERMINAL "4" OF THE LIMIT SWITCH BACK TO TERMINAL "A1" OF THE MAGNETIC STARTER.
4. ROUTE WIRING FROM LIMIT SWITCH TO ELEC. BOX AROUND OUTSIDE OF BASE FRAME AND THRU GROMMETED HOLE IN BASE NED BAR.

INSTALLATION:

1. RAISE LIFT TO DESIRED ELEVATION AND MARK BASE ANGLE AT CL OF ROLLER.
2. FOLLOW INSTRUCTION MANUAL AND BLOCK LIFT OPEN AT A POSITION THAT ALLOWS ACCESS TO MARKED AREA.

STANDARD END MOUNT

TO BE USED IN MOST CASES UNLESS INTERFERENCE BETWEEN LEG STIFFENER BAR AND LIMIT SWITCH ROLLER WHICH OCCURS IN THE COLLAPSED POSITION. TEMPORARILY HOLD LIMIT SWITCH ON THE OUTSIDE OF THE BASE FRAME AS SHOWN WITH THE LIFT AT THE DESIRED RAISED HEIGHT. THEN FULLY LOWER THE LIFT AND CHECK FOR CLEARANCE WITH THE STIFFENER BAR. IF INTERFERENCE OCCURS MOUNT LIMIT SWITCH PER PAGE 2. (OPTIONAL TOP MOUNT)



ORIENTATION

©2005
COPYRIGHT RESERVED
AUTOQUIP CORPORATION

This drawing is the sole property of Autoquip Corp. and cannot be used for design and construction without the permission of Autoquip Corp.

Autoquip
REFERENCE DRAWING:

DRAWING TITLE:

LIMIT SWITCH INSTALLATION & WIRING

APPROXIMATE WEIGHT:

<1k

DRAWN BY: DATE:

SC 3/23/88

QTY REQ'D: PAGE:

1 OF 2 3

DRAWING NUMBER:

60401106

SIZE:

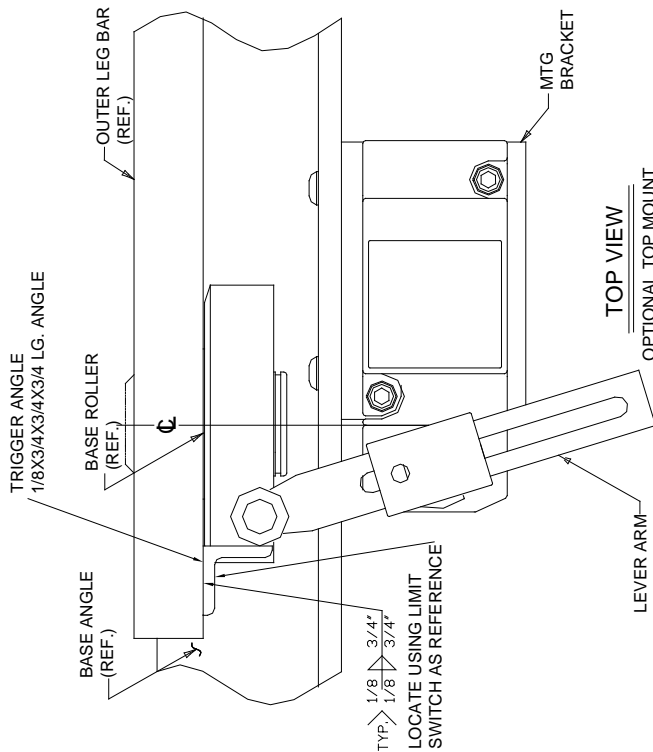
A

REV DESCRIPTION BY DATE

JOB NAME: ORDER NO:

Optional Limit Switch Wiring Diagram

60401106



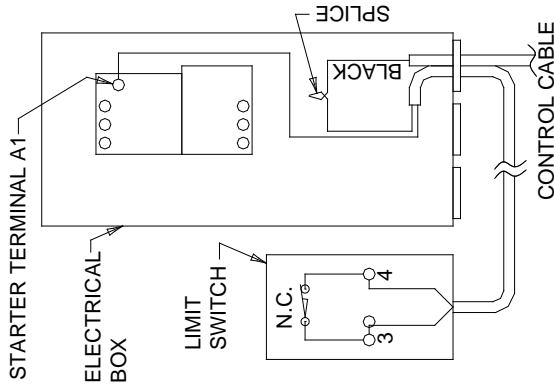
NOTES:

WIRING:

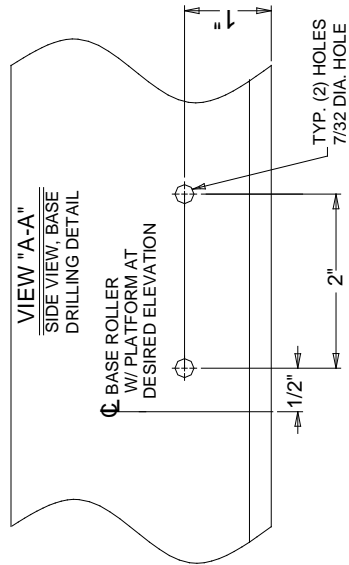
1. WARNING: ELECTRICAL HAZARD, DISCONNECT POWER BEFORE WIRING THIS ACCESSORY.
2. USE APPROPRIATE WIRE, CONDUIT, ETC. TO SATISFY LOCAL CODES. (BY OTHERS.)
3. DISCONNECT EXISTING BLACK CONTROL CABLE WIRE FROM TERMINAL "A1" OF THE MAGNETIC STARTER IN THE ELECTRICAL BOX. SPLICE TO THIS WIRE AND CONNECT TO TERMINAL "3" OF THE LIMIT SWITCH. WIRE TERMINAL "4" OF THE LIMIT SWITCH BACK TO TERMINAL "A1" OF THE MAGNETIC STARTER.
4. ROUTE WIRING FROM SWITCH TO ELEC. BOX AROUND OUTSIDE OF BASE FRAME AND THRU GROMMETED HOLE IN BASED END BAR.

INSTALLATION

1. RAISE LIFT TO DESIRED ELEVATION AND MARK BASE ANGLE AT CL OF ROLLER.
2. FOLLOW INSTRUCTION MANUAL AND BLOCK LIFT OPEN AT A POSITION THAT ALLOWS ACCESS TO MARKED AREA.
3. ATTACH TRIGGER ANGLE TO LEG OF LIFT PER DWG. WELD CLIP PER DWG...

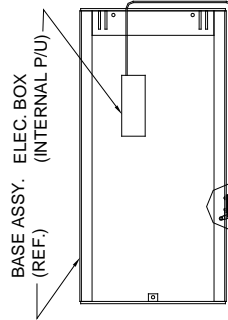


WIRING DETAIL



OPTIONAL TOP MOUNT

USED ONLY WHEN INTERFERENCE OCCURS ON STANDARD END MOUNT STYLE, EXPLAINED ON PAGE 1.

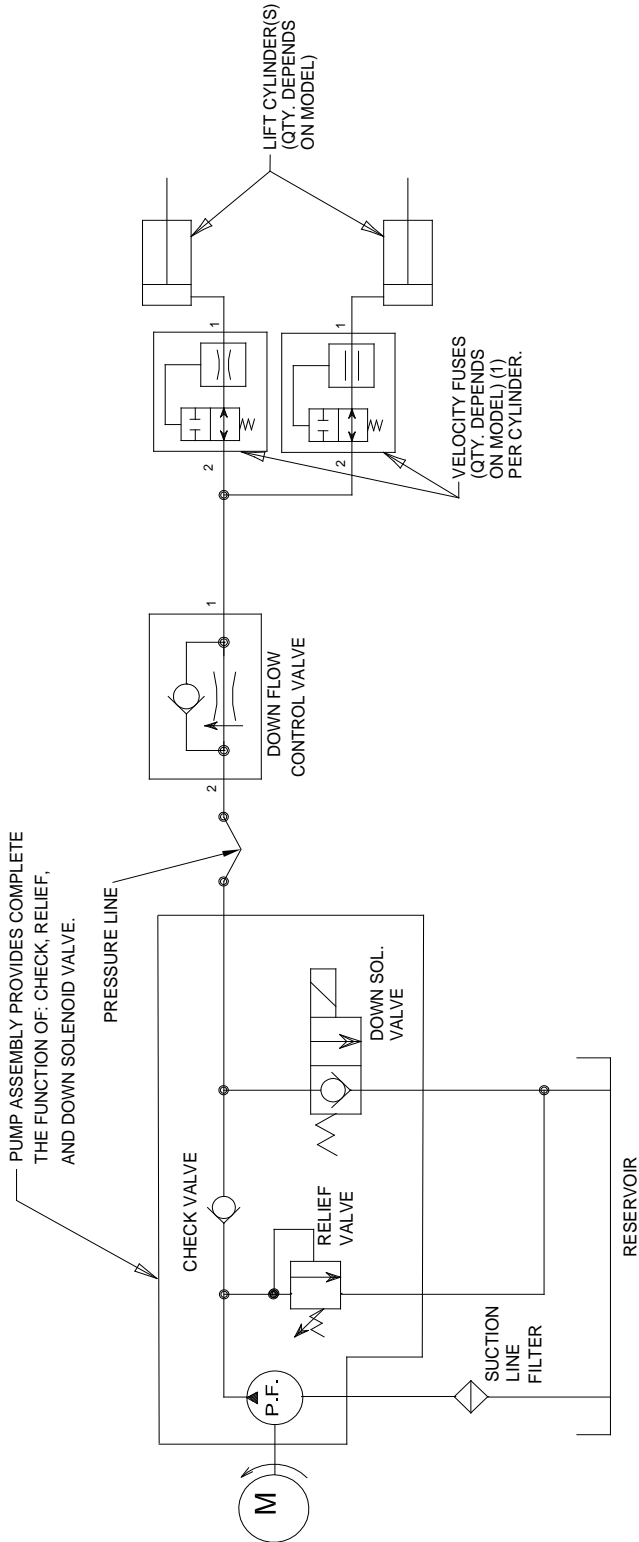


ORIENTATION

<small>©2005 COPYRIGHT RESERVED AUTODIUP CORPORATION</small> <small>This drawing is the sole property of Autoquip Corp. and cannot be used for design and construction without permission of Autoquip Corp.</small>	Autoquip <small>REFERENCE DRAWING:</small>	<small>REV/ DESCRIPTION</small> <small>JOB NAME:</small>	<small>BY</small>	<small>DATE</small>
	<small>DRAWING TITLE:</small> LIMIT SWITCH INSTALLATION & WIRING	<small>DATE:</small> 3/23/88 <small>QTY REQD:</small> 2 OF 2 <small>REV:</small> 3 <small>DRAWING NUMBER:</small> 60401106	<small>ORDER NO.:</small>	
<small>APPROXIMATE WEIGHT:</small> <1k	<small>DRAWN BY:</small> SC			
				<small>SIZE:</small> A

Optional Limit Switch Wiring Diagram, Continued

657-5004-0



Hydraulic Schematic (Standard & Contractor PU)

HYDRAULIC SCHEMATIC

©2005 COPYRIGHT RESERVED AUTODQUIP CORPORATION This drawing is the sole property of Autoquip Corp. and cannot be used for design and construction of without permission of Autoquip Corp.	Autoquip REFERENCE DRAWING: 658-0732-3 APPROXIMATE WEIGHT: N/A	DRAWING TITLE: HYD SCH FOR SM & PLT-C DRAWN BY: DWL DATE: 9/11/95	REV. DESCRIPTION JOB NAME:	BY	DATE ORDER NO:
	QTY REQD: 1 OF 1	PAGE: 2	REV. NUMBER: 657-5004-0	SIZE: A	

6.3.6 Troubleshooting

WARNING

Prevent serious injury or death.

Disconnect and/or lock out electrical supply to power unit prior to any maintenance being performed.



⚠ WARNING

Prevent serious injury or death.

Never go under lift platform until load is removed and scissors mechanism is securely blocked in open position. Follow OSHA lock-out/tag-out procedure.



See "Maintenance Devices" section.

⚠ WARNING

Pressurized fluids can penetrate the skin.

Hydraulic hoses can fail from age, damage and exposure.



Do not search for hydraulic leaks without body and face protection. A tiny, almost invisible leak can penetrate the skin, thereby requiring immediate medical attention.

Use wood or cardboard to detect hydraulic leaks, never your hands.

⚠ WARNING

Spilled hydraulic fluid is slippery and may also present a fire hazard.

Clean up spilled hydraulic fluid.



PROBLEM	POSSIBLE CAUSE AND SOLUTION
Lift Raises, Then Lowers Slowly.	<p>Down solenoid may not be seating. Remove solenoid coil and check. If lift does not hold with solenoid coil removed, remove and clean down valve cartridge or replaced as necessary.</p> <p>Oil line, hose, or fitting may be leaking. Check and repair if necessary.</p> <p>Check valve in pump assembly may not be seating. This is indicated by pump shaft and motor turning backward on their own with no power applied. Generally, this condition can be heard. Replace pump assembly.</p>
Lift Lowers Slowly.	<p>Down solenoid is not operating properly due to debris or damage.</p> <p>Check for pinched tubing or hose. Where pipe is used, check for obstruction in line.</p> <p>Thick oil due to low ambient temperatures. Add or replace with lower weight oil that stays thin in cold conditions (5W-15, etc.)</p> <p>If foam is visible in tank oil, check for loose connection in suction line between pump and tank. Tighten connections.</p>
Lift Does Not Raise.	<p>Motor rotation for a 3-phase motor may be reversed. Reverse two motor electrical leads.</p> <p>Check for line or hose leak.</p> <p>Check for low oil in reservoir. Add specified oil as necessary.</p> <p>Load may exceed rating. See the Specifications section. Remove excess load.</p> <p>Suction screen may be clogged, starving pump. Remove and clean screen. Drain and replace oil.</p> <p>Suction line may be leaking air due to a loose fitting. Tighten as needed.</p>

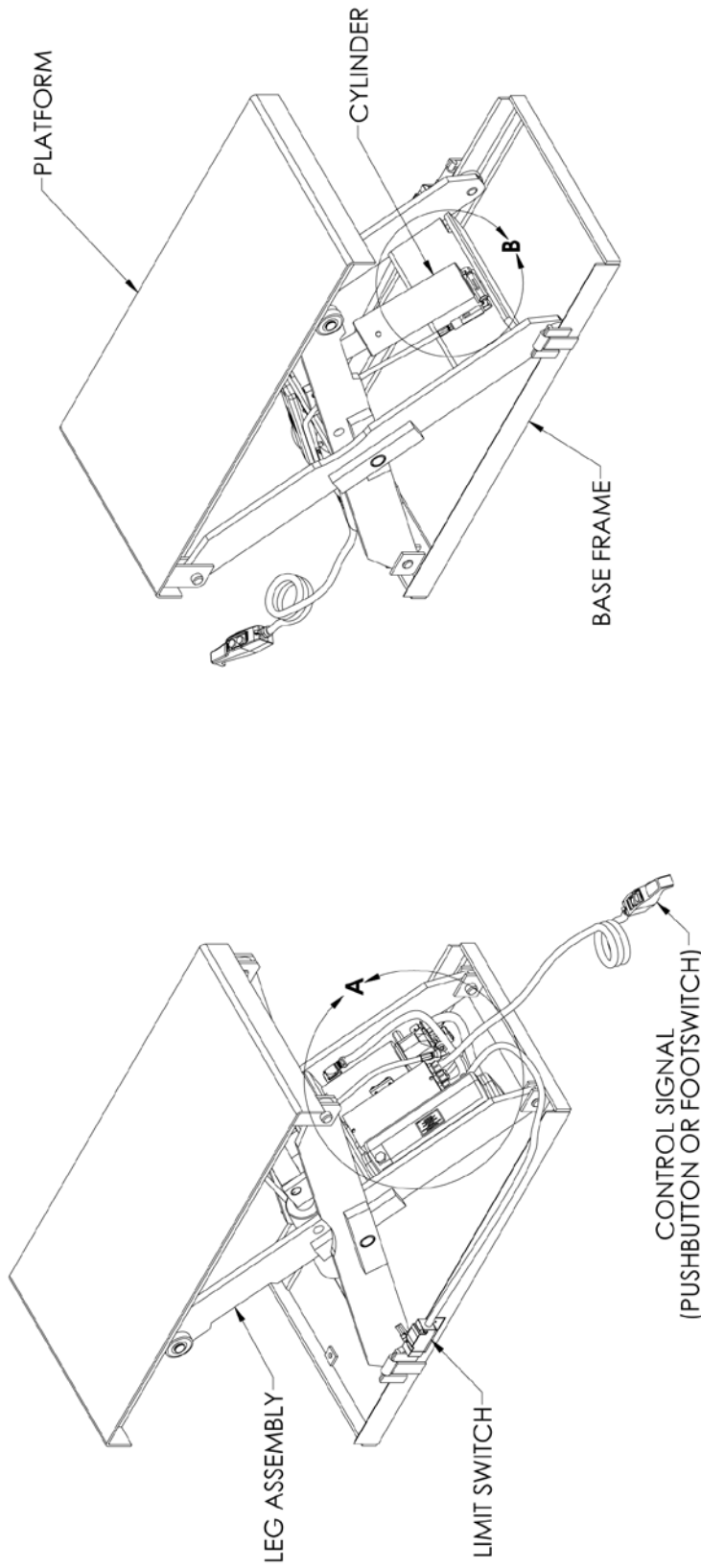
PROBLEM	POSSIBLE CAUSE AND SOLUTION
Lift Does Not Raise, Continued.	<p>Breather holes in reservoir fill plug may be clogged. Remove and clean.</p> <p>Voltage may be too low to run pump with existing load. Check by measuring voltage at motor terminals, or as near as possible, <u>while pump is running under load</u>. Inadequate or incorrect wiring can starve motor when source voltage is ample. Correct as necessary.</p> <p>Down valve may be energized by faulty wiring or stuck open. Remove solenoid and check.</p> <p>Motor may be single phasing. Check wiring, fuses, etc.</p> <p>Pump may be seized if motor is humming or blowing fuses on overload protection devices. Remove pump. Pump can be rotated by hand unless seized. Check for cracks in housing.</p> <p>Down solenoid valve stem may be bent, causing valve to stick open. Replace down solenoid valve.</p>

PROBLEM	POSSIBLE CAUSE AND SOLUTION
Lift Won't Lower.	<p>Solenoid coil may be incorrectly wired, burned out, not rated for the voltage, or line voltage may be excessively low. Check voltage near coil.</p> <p>Velocity fuse may be locked. Do not attempt to remove the velocity fuse. The following steps should be followed:</p> <ol style="list-style-type: none"> 1. Remove load from lift. Inspect all fittings, hoses, and other hydraulic components for leaks or damage. 2. If no leak or damage is noticed, attempt to pressurize lifting cylinder by pressing "UP" button on controller for a few seconds. Immediately release "UP" button and press "DOWN" button. If lift starts to lower, continue pressing "DOWN" button until lift is fully lowered. 3. If lift does not lower after trying Step 2, wait approximately 10 – 15 minutes for pressure in hydraulic system to equalize. Then, press "DOWN" button until lift is fully lowered. 4. Once lift is fully lowered, hold "DOWN" button for approximately 60 seconds to bleed air from system. This step may need to be repeated several times to fully remove air in system by raising the lift to 50% of its travel and lowering. <p>If above steps do not correct problem, contact <i>Autoquip</i> to obtain instruction for further action.</p>

PROBLEM	POSSIBLE CAUSE AND SOLUTION
Lift Seems Bouncy During Operation.	<p data-bbox="505 197 1477 331">Lower lift to closed position and continue to hold "DOWN" button an additional 10-30 seconds to bleed air from cylinder. Do not confuse spongy or jerky operation with small surges that may occur when operating on rough or uneven floors.</p> <p data-bbox="505 363 813 394">Check for oil starvation.</p>
Motor Labors Or Heats Excessively.	<p data-bbox="505 401 1477 499">Voltage may be low. Check voltage at motor terminals while pump is <u>running under load</u>, not at line source or while pump is idling. Inadequate wiring can starve motor even when source voltage is ample.</p> <p data-bbox="505 531 1477 665">Most of <i>Autoquip's</i> standard motors are rated for intermittent duty. If a single-phase motor is being run more than 15 – 20 motor starts per hour, or a 3-phase motor more than 200 starts per hour, the problem may be motor over-heating.</p> <p data-bbox="505 697 1477 764">Running against relief pressure unnecessarily due to over loaded lift or hitting physical stops.</p> <p data-bbox="505 795 1477 863">Failure to observe wiring diagram on nameplate for proper voltage connections.</p> <p data-bbox="505 894 1477 995">Pump may be binding from oil starvation, which develops high internal heat. Check for low oil level or clogged breather holes in reservoir fill plug. Pump can be damaged by oil starvation.</p>

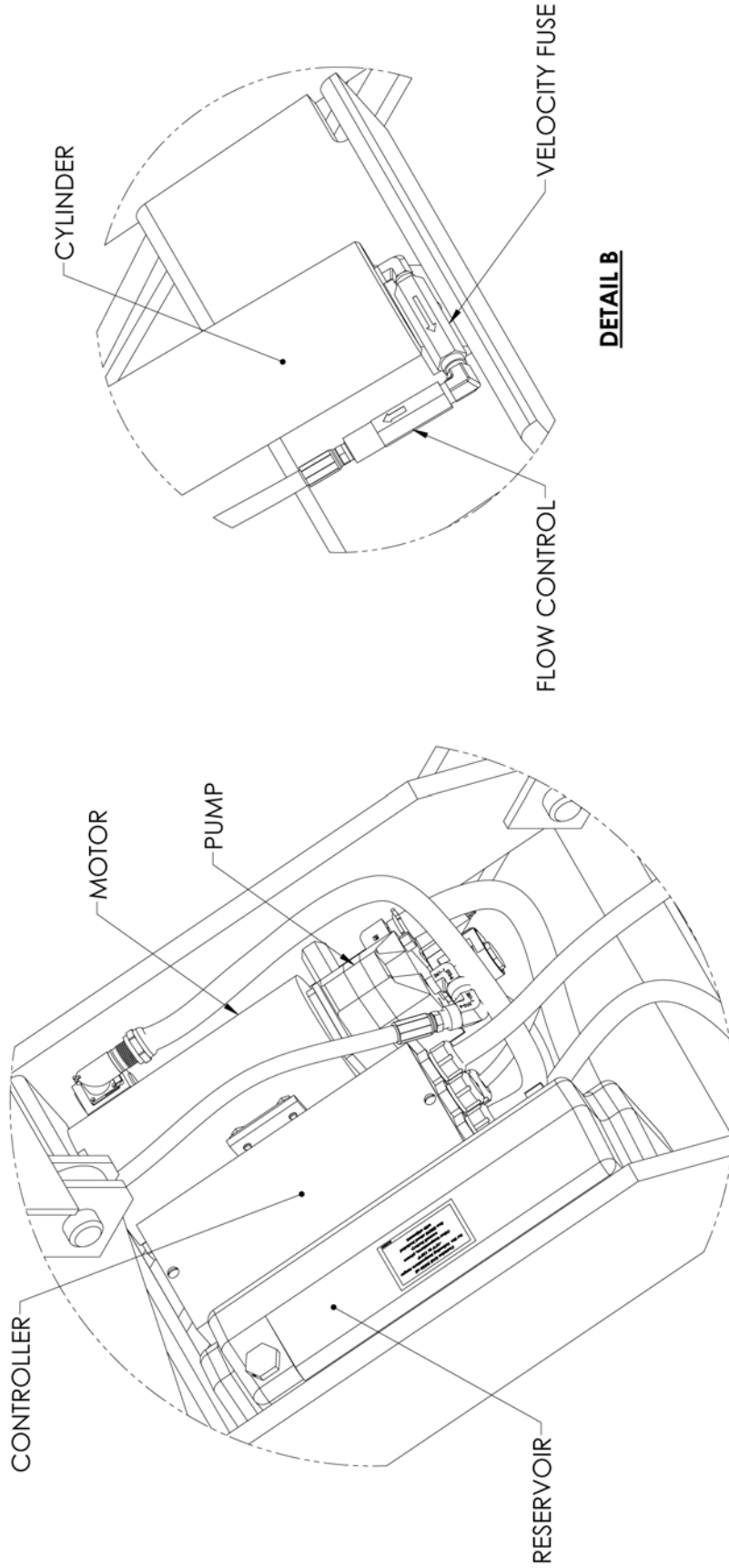
7. PARTS LISTS

ASSEMBLY 1 OF 8




Standard Lift

NO.	DESCRIPTION	BY	CHK'D	DATE
UNLESS OTHERWISE SPECIFIED:				
TOLERANCES				
DECIMALS: ±.1, .125 FRACTIONS: 1/32, 1/16, 3/32, 1/8, 3/16, 1/4, 3/8, 1/2, 5/8, 3/4, 7/8 ANGLES (FOR MACHINED PARTS): 30°, 45°, 60°, 90°, 120°, 150°, 180° BREAK ALL SHARP EDGES, .015" MAX. 45° CHAMFER.				
2013 COPYRIGHT RESERVED All rights reserved. This drawing is the sole property of Autolog Corp. No part of this drawing may be reproduced or transmitted in any form or by any means, electronic, mechanical, photocopying, recording, or by any information storage and retrieval system, without the prior written permission of Autolog Corp.				
REFERENCE DRAWING:		DRAWING NO.:		
APPROXIMATE WEIGHT:		SCALE:		
DRAWN BY: JCJ		REV.:		
CHECKED BY: TB		ASSEMBLY		
DATE: 02/25/13		1 OF 8		
DRAWING NUMBER:		B		

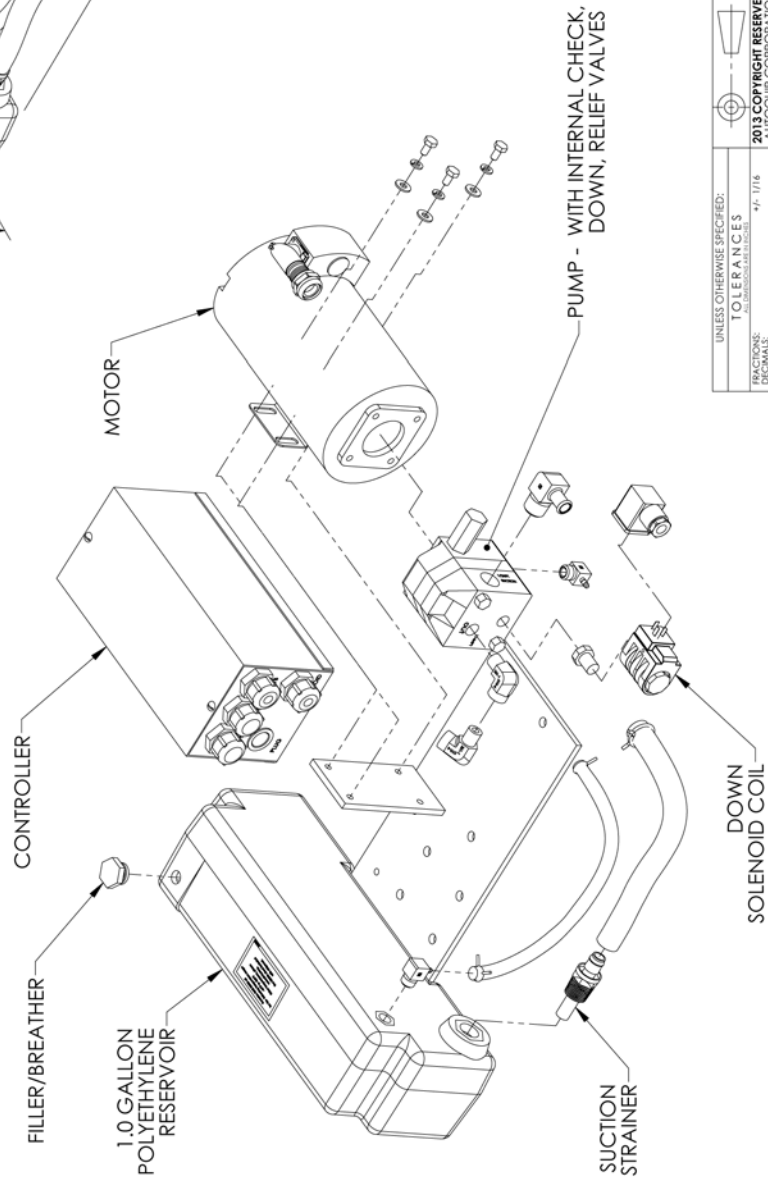
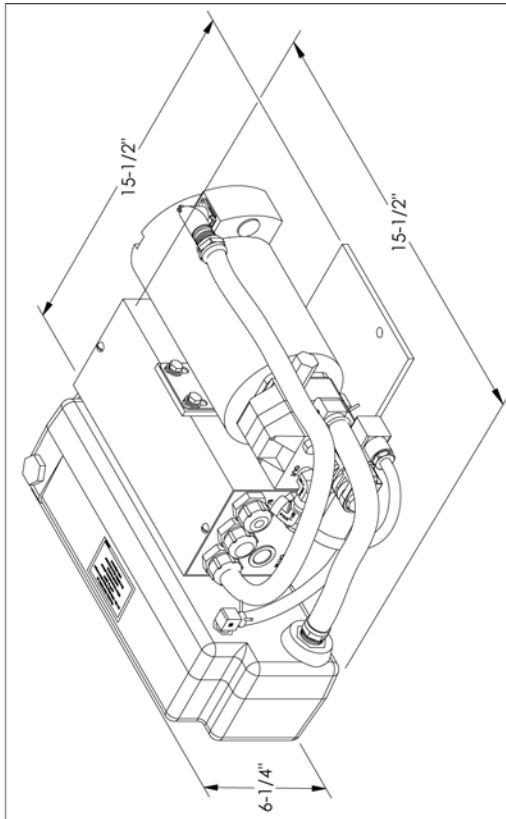


Standard Lift, Continued

UNLESS OTHERWISE SPECIFIED:		TOLERANCES: FRACTIONS: 1/16 DECIMALS: .0005 THREE PLACE: .001 ANGLES (FOR MACHINING PARTS): 1/2°, 1° BREAK ALL SHARP EDGES, 0.10" MAX. 45° CHAMFER	
 2013 COPYRIGHT RESERVED AUTOBOG CORPORATION This drawing is the sole property of Autobog Corporation. No part of this drawing may be reproduced, stored in a retrieval system, or used for design or construction without permission of Autobog Corp.		RESERVOIR DRAWING: - APPROXIMATE FIGURE: - DATE: 02/25/13 DRAWN BY: J.C.J. TB CHECKED BY: - JOB NAME: - JOB NO: -	DRAWING NUMBER: - DATE: 02/25/13 PAGE: 2 OF 8 REV: B ASSEMBLY

ASSEMBLY 3 OF 8

NOTE:
DIMENSIONS ARE APPROXIMATE

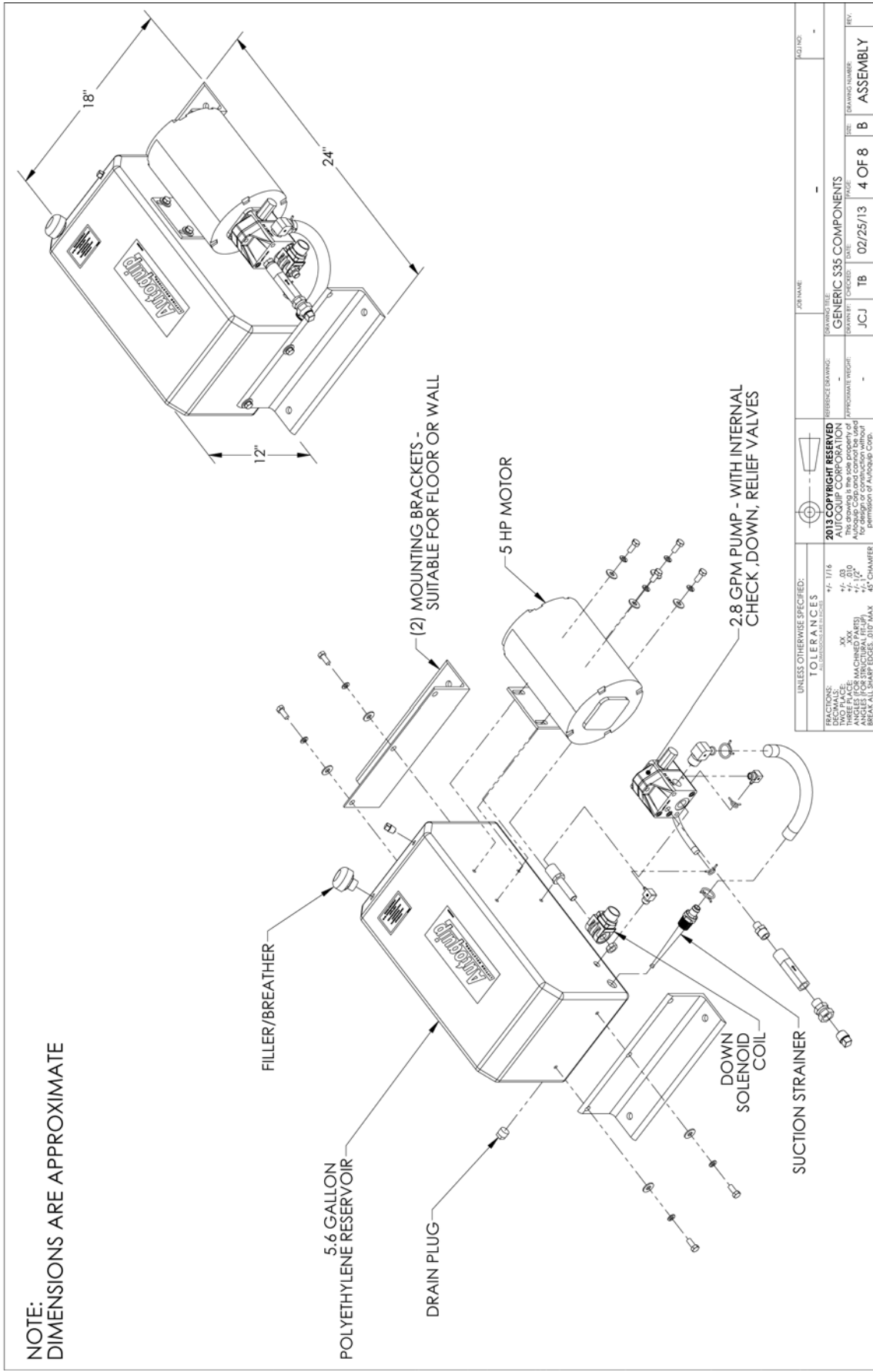


UNLESS OTHERWISE SPECIFIED:		TOLERANCES		JOB NAME		JOB NO.	
FRACTIONS:	1/16	ALL DIMENSIONS UNLESS NOTED		DRAWING TITLE:	GENERIC S35 COMPONENTS		
DIMINUTIONS:	XX			DRAWN BY:	JCJ	TB	02/25/13
THREE PLACE:	MAX CHAMFER (R)			CHECKED:	3 OF 8		
ANGLES:	45° CHAMFER			DATE:	02/25/13		
ANGLE FOR STRUCTURAL TIEUP:	45° CHAMFER			PERMITS:	B		
BREAK ALL SHARP EDGES:	0.01" MAX			APPROXIMATE WEIGHT:	-		
2013 COPYRIGHT RESERVED AUTOQUIP CORPORATION This drawing is the sole property of AUTOQUIP CORPORATION and is not to be reproduced, copied, or used for any purpose other than that intended without the written permission of Autoquip Corp.				DRAWING NUMBER:			
				ASSEMBLY			

Series 35 Power Unit

ASSEMBLY 4 OF 8

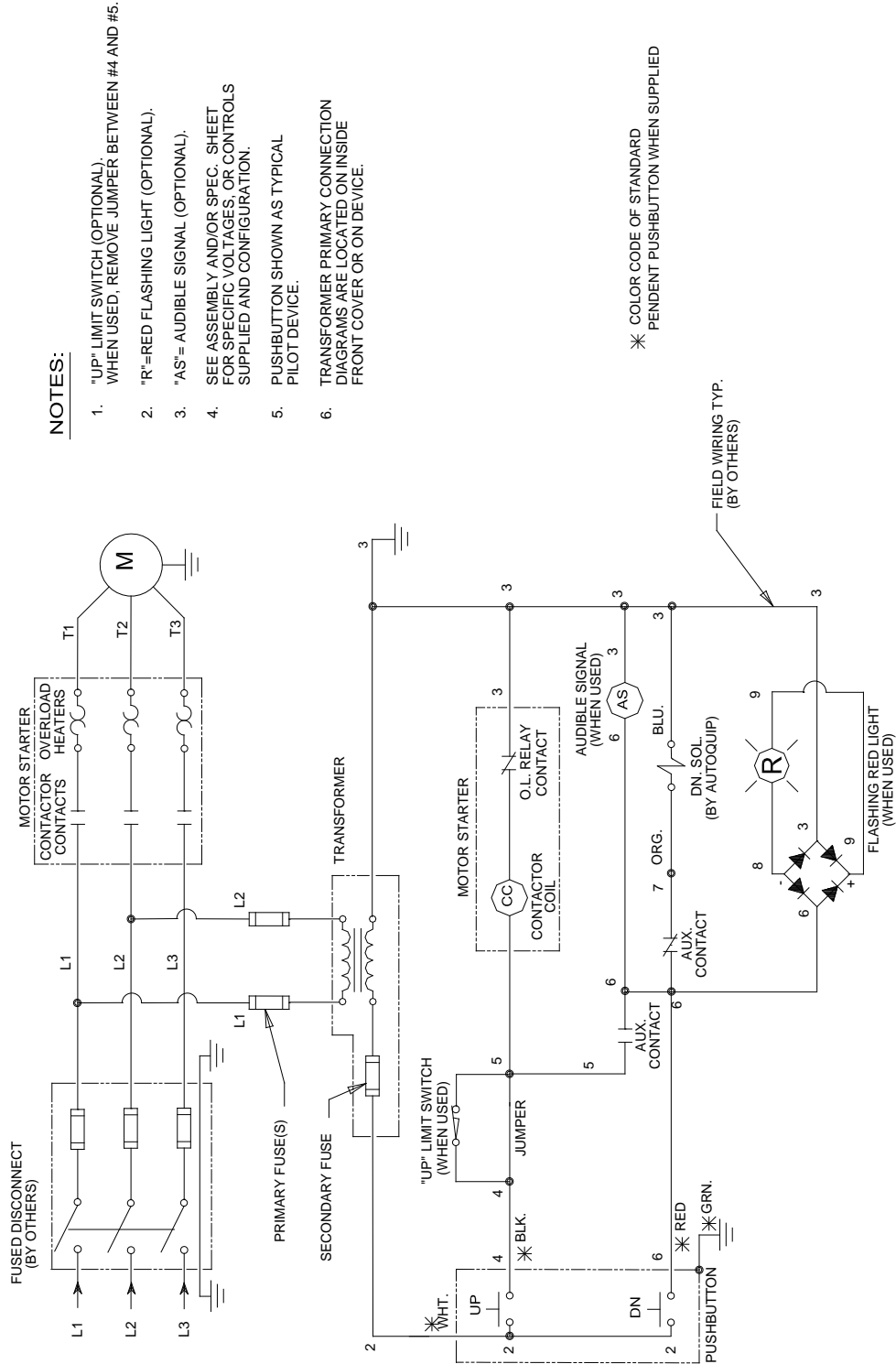
NOTE:
DIMENSIONS ARE APPROXIMATE



UNLESS OTHERWISE SPECIFIED:		TOLERANCES		JOB NAME		JOB NO.	
FRACTIONS:	1/16	FRACTIONS:	1/16	PROJECT:	GENERIC S35 COMPONENTS	DATE:	02/25/13
DIMENSIONS:	1/16	DIMENSIONS:	1/16	DRAWN BY:	J.C.J.	DATE:	02/25/13
THREE PLACE:	.001	THREE PLACE:	.001	CHECKED BY:	T.B.	DATE:	02/25/13
ANGLES (FOR MACHINING PARTS):	1/2°, 1°	ANGLES (FOR MACHINING PARTS):	1/2°, 1°	APPROXIMATE PRICE:		REV:	B
BRACKETS (ALL SHARP EDGES, 0.10" MAX. RADIUS):	45° CHAMFER	BRACKETS (ALL SHARP EDGES, 0.10" MAX. RADIUS):	45° CHAMFER	PERMISSION OF CONSTRUCTION WITHOUT PERMISSION OF AUTOQUIP CORP.:		REV:	ASSEMBLY

Contractor Power Unit

00/UUU3U



NOTES:

1. "UP" LIMIT SWITCH (OPTIONAL), WHEN USED, REMOVE JUMPER BETWEEN #4 AND #5.
2. "R"=RED FLASHING LIGHT (OPTIONAL).
3. "AS"= AUDIBLE SIGNAL (OPTIONAL).
4. SEE ASSEMBLY AND/OR SPEC. SHEET FOR SPECIFIC VOLTAGES, OR CONTROLS SUPPLIED AND CONFIGURATION.
5. PUSHBUTTON SHOWN AS TYPICAL PILOT DEVICE.
6. TRANSFORMER PRIMARY CONNECTION DIAGRAMS ARE LOCATED ON INSIDE FRONT COVER OR ON DEVICE.

* COLOR CODE OF STANDARD PENDENT PUSHBUTTON WHEN SUPPLIED

FIELD WIRING TYP. (BY OTHERS)

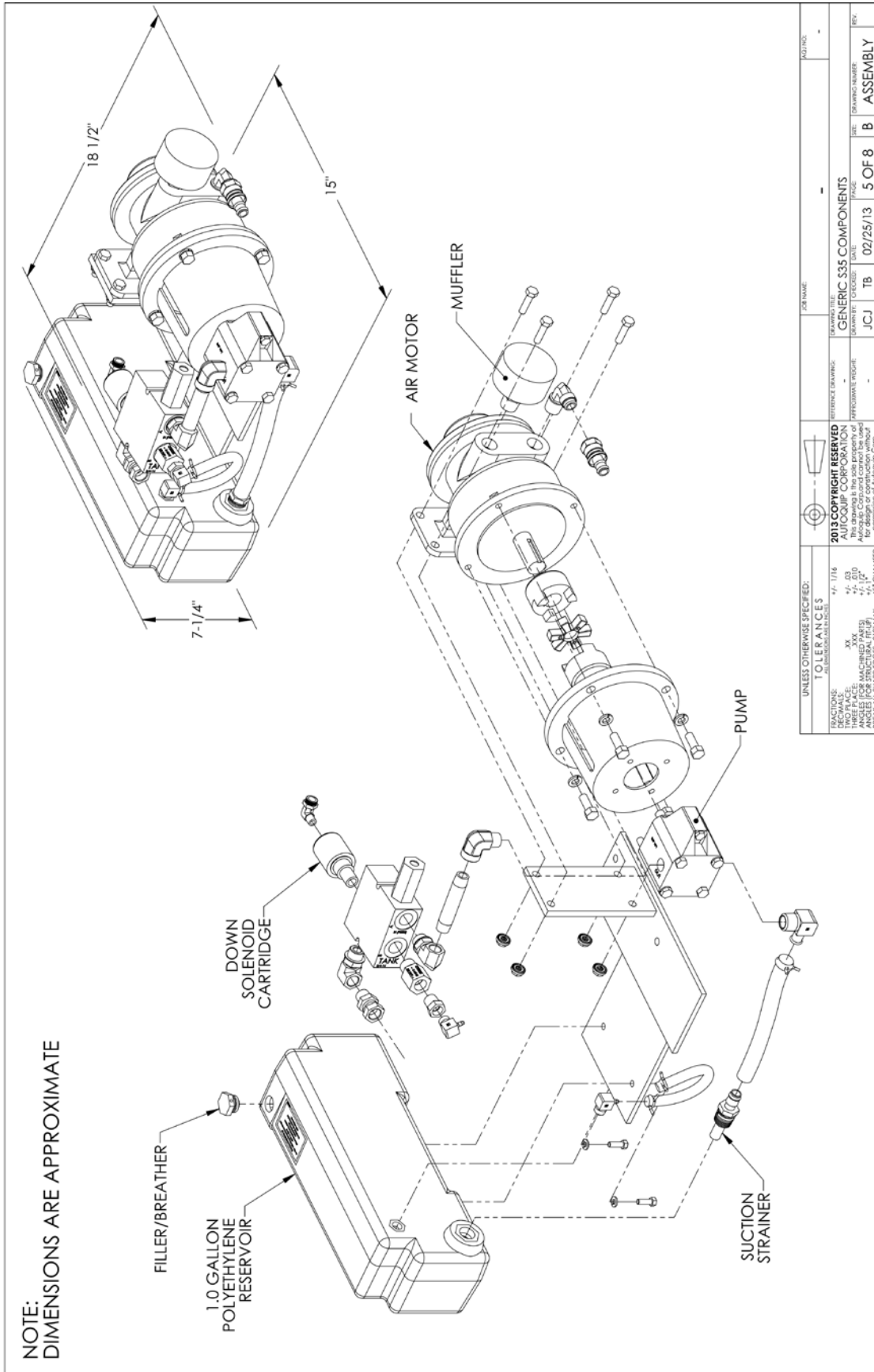
5HP / 208-230-460V / 3 Phase Contractor PU

REV DESCRIPTION		BY	DATE
JOB NAME:			ORDER NO:
Autoquip			
REFERENCE DRAWING:	DRAWING TITLE: ELEC SCH FOR VERT & CONTR PU		
DRAWN BY: CG/WB	DATE: 7/21/95	QTY REQ'D: 1 OF 1	REV: 3
APPROXIMATE WEIGHT:	DRAWING NUMBER: 65700030		SIZE: A
<small>©2005 AUTOQUIP CORPORATION This drawing is the sole property of Autoquip Corp. and cannot be used for design and construction without permission of Autoquip Corp.</small>			

Air Requirement: 90 PSI & 110 CFM

ASSEMBLY 5 OF 8

NOTE:
DIMENSIONS ARE APPROXIMATE

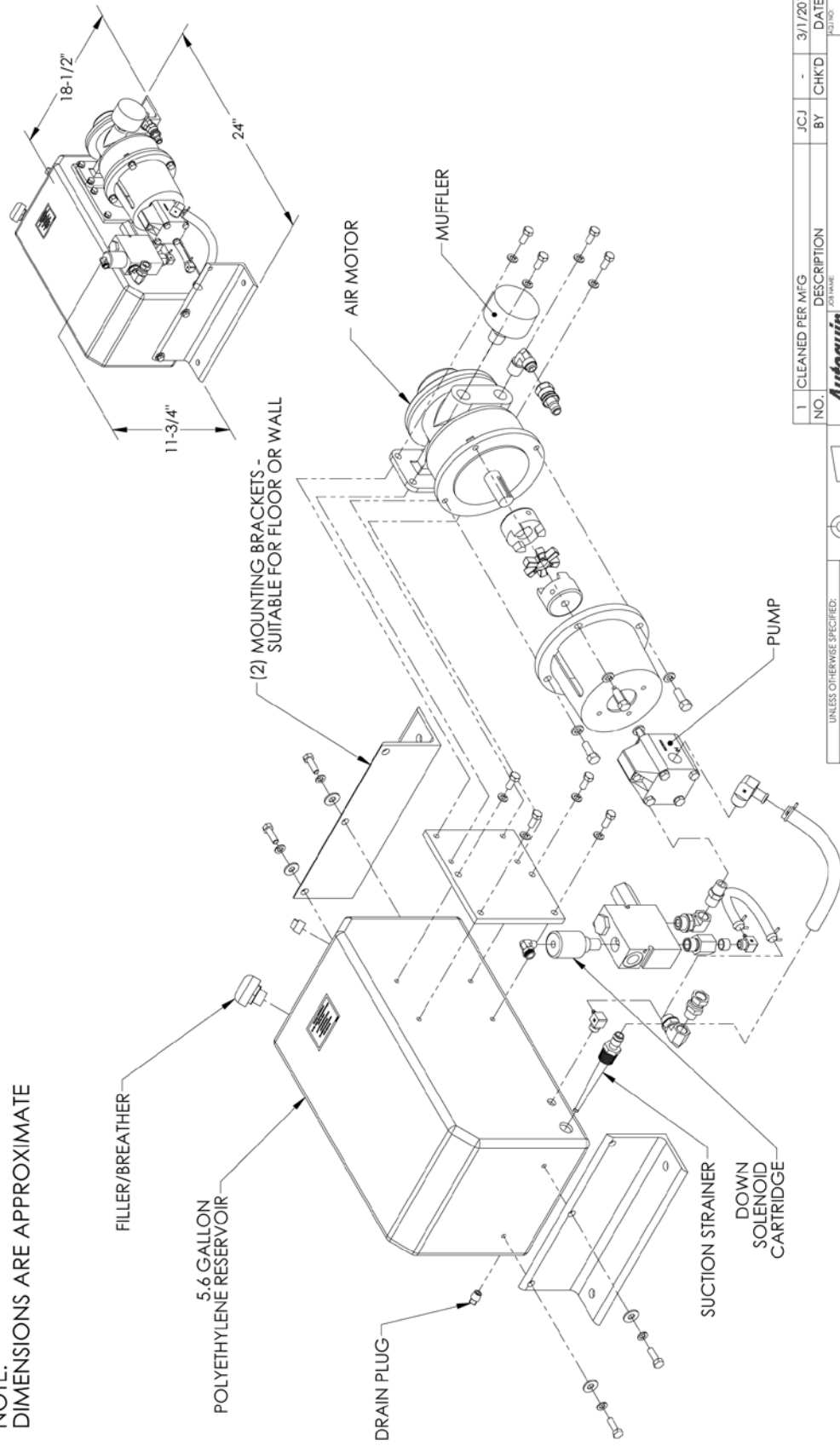


UNLESS OTHERWISE SPECIFIED:		JOB NAME	
TOLERANCES ALL DIMENSIONS UNLESS NOTED		DRAWING TITLE	
FRACTIONS:	1/16	GENERIC S35 COMPONENTS	
DECIMALS:	.01	DRAWN BY	JCJ
THREE PLACE:	.001	CHECKED BY	TB
ANGLES:	1/2°, 1°, 1/4°	DATE	02/25/13
BREAK ALL SHARP EDGES, .010" MAX.		PERFORMANCE	5 OF 8
		PERMISSION OF	B
		DATE	ASSEMBLY
		REV.	

Series 35 Air Power Unit (P/N 64306710)

ASSEMBLY 6 OF 8

NOTE:
DIMENSIONS ARE APPROXIMATE

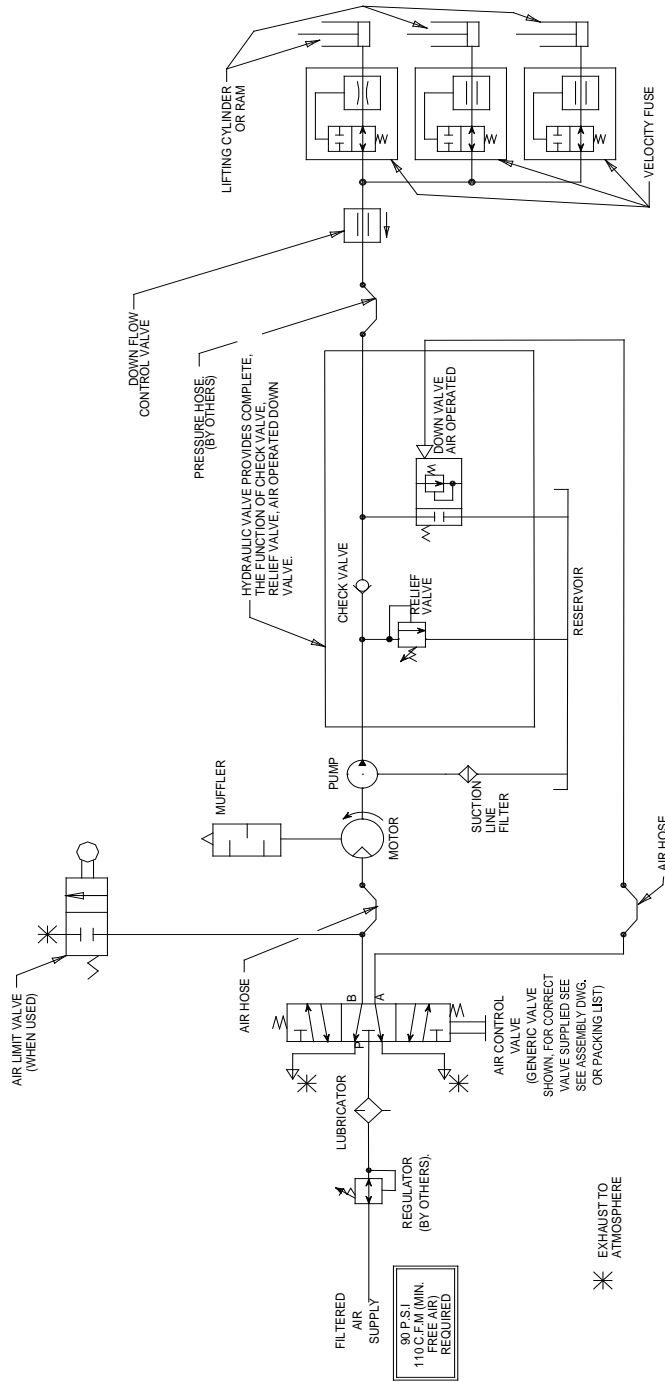


1	CLEANED PER MFG	JCJ	-	3/1/2013
NO.	DESCRIPTION	BY	CHKD	DATE
Autoquip				
<small> REFERENCE DRAWING: (DRAWING TITLE) 2013 COPYRIGHT RESERVED AUTOQUIP CORPORATION AUTOQUIP IS A REGISTERED TRADEMARK OF AUTOQUIP CORPORATION AND IS USED HEREIN FOR DESIGN OR CONSTRUCTION WITHOUT PERMISSION OF Autoquip Corp. </small>				
APPROXIMATE WEIGHT	J.C.J	TB	02/25/13	6 OF 8
SIZE	B		ASSEMBLY	REV.

UNLESS OTHERWISE SPECIFIED:	
TOLERANCES	±.1/16
FINISHES	XX
THREADS	XX
SPRINGS	XX
ANGLES (FOR STRUCTURAL FITUP)	±.1°
BREAK ALL SHARP EDGES	R0.07 MAX
CONVERTERS	45° CONVENTERS

Contractor Air Power Unit (P/N 64306700)

65825000



AIR / HYDRAULIC SCHEMATIC

<p>©2005 COPYRIGHT RESERVED Autoquip CORPORATION</p>		<p>JOB NAME:</p>		<p>ORDER NO:</p>	
<p>REFERENCE DRAWING: 65808750</p>		<p>DRAWING TITLE: AIR/HYD. SCHEM FOR AIR MOTOR P.U. - DELTA</p>		<p>DRAWING NUMBER: 65825000</p>	
<p>APPROXIMATE WEIGHT:</p>		<p>DRAWN BY: TB</p>		<p>REV.:</p>	
<p>This drawing is the sole property of Autoquip Corp. and cannot be used for design and construction without permission of Autoquip Corp.</p>		<p>DATE: 8/22/00</p>		<p>QTY RECD: PAGE: 1 OF 1</p>	
<p>SIZE:</p>		<p>SIZE: A</p>			

Standard & Contractor Air Power Units

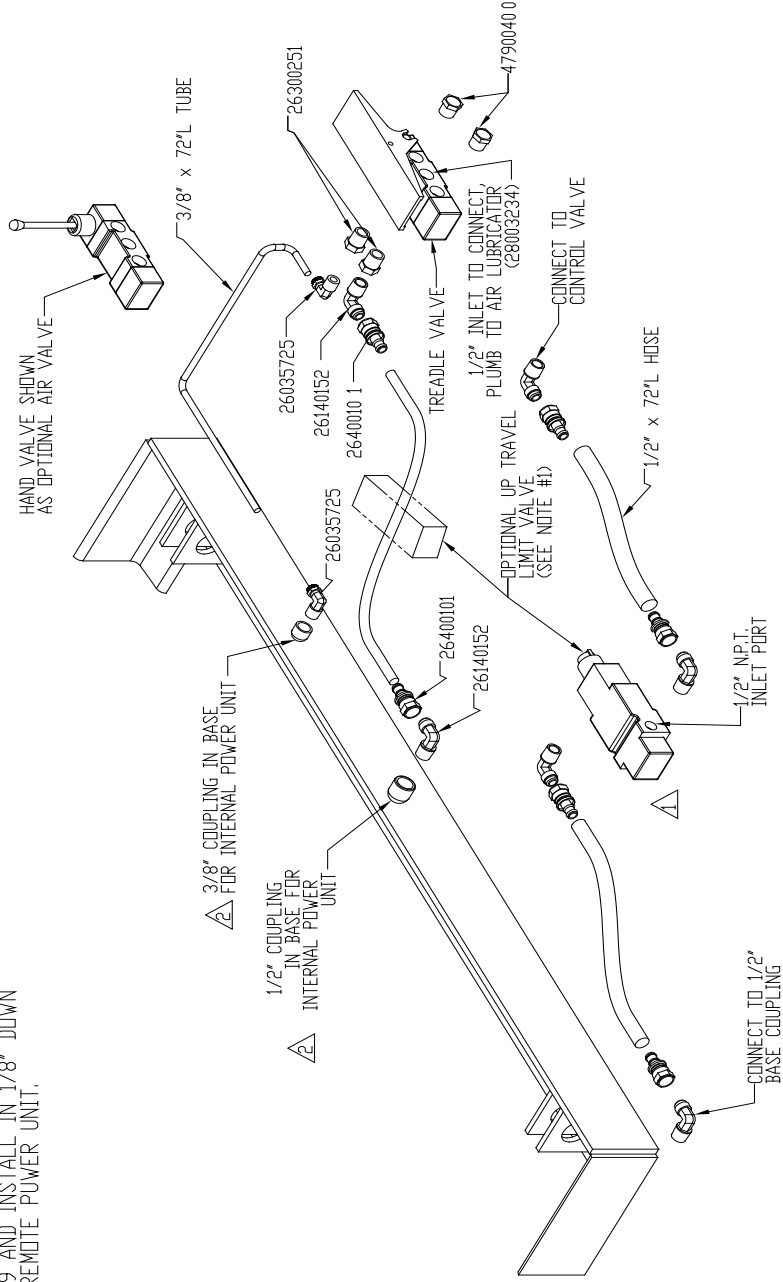
35105280 1 DF 1

NOTE:

1. "UP TRAVEL" LIMIT VALVE IS A NORMALLY OPEN VALVE; CAM ACTUATED. REQUIRED TRAVEL OF CAM FOR VALVE ACTIVATION IS 7/16". LOCATE & ADJUST VALVE LOCATION SO THAT MAXIMUM TRAVEL OF CAM DOES NOT EXCEED 1/2" TRAVEL.

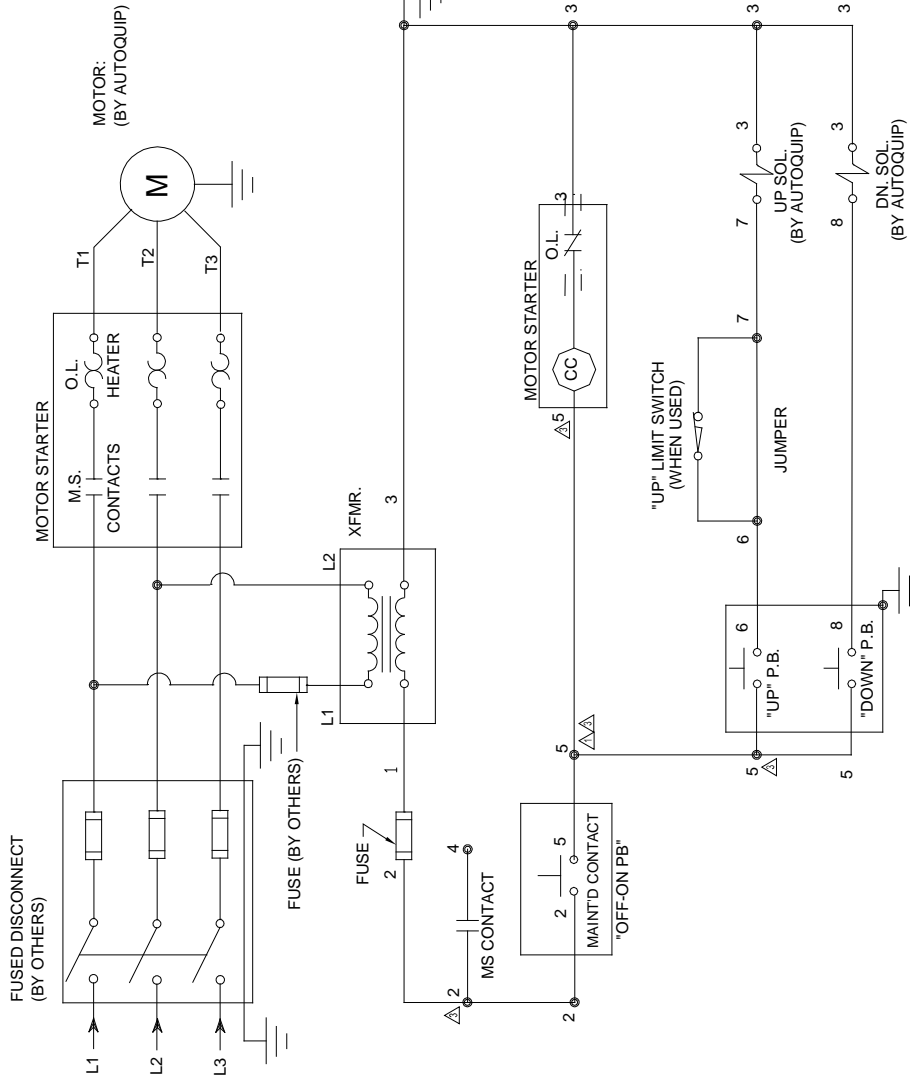
2. FOR REMOTE POWER UNIT

CONNECT FITTING #26140152 TO AIR MOTOR 1/2" PORT. FOR PLUMBING THE 3/8" TUBING USE FITTING #26035709 AND INSTALL IN 1/8" DOWN VALVE PORT ON REMOTE POWER UNIT.



Air Valve Hose Diagram for Air Power Unit

REV	DESCRIPTION	DATE
1	REVISED TO SHOW REVISED PARTS	
2	REVISED TO SHOW REVISED PARTS	
3	REVISED TO SHOW REVISED PARTS	
4	REVISED TO SHOW REVISED PARTS	
5	REVISED TO SHOW REVISED PARTS	
6	REVISED TO SHOW REVISED PARTS	
7	REVISED TO SHOW REVISED PARTS	
8	REVISED TO SHOW REVISED PARTS	
9	REVISED TO SHOW REVISED PARTS	
10	REVISED TO SHOW REVISED PARTS	
11	REVISED TO SHOW REVISED PARTS	
12	REVISED TO SHOW REVISED PARTS	
13	REVISED TO SHOW REVISED PARTS	
14	REVISED TO SHOW REVISED PARTS	
15	REVISED TO SHOW REVISED PARTS	
16	REVISED TO SHOW REVISED PARTS	
17	REVISED TO SHOW REVISED PARTS	
18	REVISED TO SHOW REVISED PARTS	
19	REVISED TO SHOW REVISED PARTS	
20	REVISED TO SHOW REVISED PARTS	
21	REVISED TO SHOW REVISED PARTS	
22	REVISED TO SHOW REVISED PARTS	
23	REVISED TO SHOW REVISED PARTS	
24	REVISED TO SHOW REVISED PARTS	
25	REVISED TO SHOW REVISED PARTS	
26	REVISED TO SHOW REVISED PARTS	
27	REVISED TO SHOW REVISED PARTS	
28	REVISED TO SHOW REVISED PARTS	
29	REVISED TO SHOW REVISED PARTS	
30	REVISED TO SHOW REVISED PARTS	
31	REVISED TO SHOW REVISED PARTS	
32	REVISED TO SHOW REVISED PARTS	
33	REVISED TO SHOW REVISED PARTS	
34	REVISED TO SHOW REVISED PARTS	
35	REVISED TO SHOW REVISED PARTS	
36	REVISED TO SHOW REVISED PARTS	
37	REVISED TO SHOW REVISED PARTS	
38	REVISED TO SHOW REVISED PARTS	
39	REVISED TO SHOW REVISED PARTS	
40	REVISED TO SHOW REVISED PARTS	
41	REVISED TO SHOW REVISED PARTS	
42	REVISED TO SHOW REVISED PARTS	
43	REVISED TO SHOW REVISED PARTS	
44	REVISED TO SHOW REVISED PARTS	
45	REVISED TO SHOW REVISED PARTS	
46	REVISED TO SHOW REVISED PARTS	
47	REVISED TO SHOW REVISED PARTS	
48	REVISED TO SHOW REVISED PARTS	
49	REVISED TO SHOW REVISED PARTS	
50	REVISED TO SHOW REVISED PARTS	
51	REVISED TO SHOW REVISED PARTS	
52	REVISED TO SHOW REVISED PARTS	
53	REVISED TO SHOW REVISED PARTS	
54	REVISED TO SHOW REVISED PARTS	
55	REVISED TO SHOW REVISED PARTS	
56	REVISED TO SHOW REVISED PARTS	
57	REVISED TO SHOW REVISED PARTS	
58	REVISED TO SHOW REVISED PARTS	
59	REVISED TO SHOW REVISED PARTS	
60	REVISED TO SHOW REVISED PARTS	
61	REVISED TO SHOW REVISED PARTS	
62	REVISED TO SHOW REVISED PARTS	
63	REVISED TO SHOW REVISED PARTS	
64	REVISED TO SHOW REVISED PARTS	
65	REVISED TO SHOW REVISED PARTS	
66	REVISED TO SHOW REVISED PARTS	
67	REVISED TO SHOW REVISED PARTS	
68	REVISED TO SHOW REVISED PARTS	
69	REVISED TO SHOW REVISED PARTS	
70	REVISED TO SHOW REVISED PARTS	
71	REVISED TO SHOW REVISED PARTS	
72	REVISED TO SHOW REVISED PARTS	
73	REVISED TO SHOW REVISED PARTS	
74	REVISED TO SHOW REVISED PARTS	
75	REVISED TO SHOW REVISED PARTS	
76	REVISED TO SHOW REVISED PARTS	
77	REVISED TO SHOW REVISED PARTS	
78	REVISED TO SHOW REVISED PARTS	
79	REVISED TO SHOW REVISED PARTS	
80	REVISED TO SHOW REVISED PARTS	
81	REVISED TO SHOW REVISED PARTS	
82	REVISED TO SHOW REVISED PARTS	
83	REVISED TO SHOW REVISED PARTS	
84	REVISED TO SHOW REVISED PARTS	
85	REVISED TO SHOW REVISED PARTS	
86	REVISED TO SHOW REVISED PARTS	
87	REVISED TO SHOW REVISED PARTS	
88	REVISED TO SHOW REVISED PARTS	
89	REVISED TO SHOW REVISED PARTS	
90	REVISED TO SHOW REVISED PARTS	
91	REVISED TO SHOW REVISED PARTS	
92	REVISED TO SHOW REVISED PARTS	
93	REVISED TO SHOW REVISED PARTS	
94	REVISED TO SHOW REVISED PARTS	
95	REVISED TO SHOW REVISED PARTS	
96	REVISED TO SHOW REVISED PARTS	
97	REVISED TO SHOW REVISED PARTS	
98	REVISED TO SHOW REVISED PARTS	
99	REVISED TO SHOW REVISED PARTS	
100	REVISED TO SHOW REVISED PARTS	



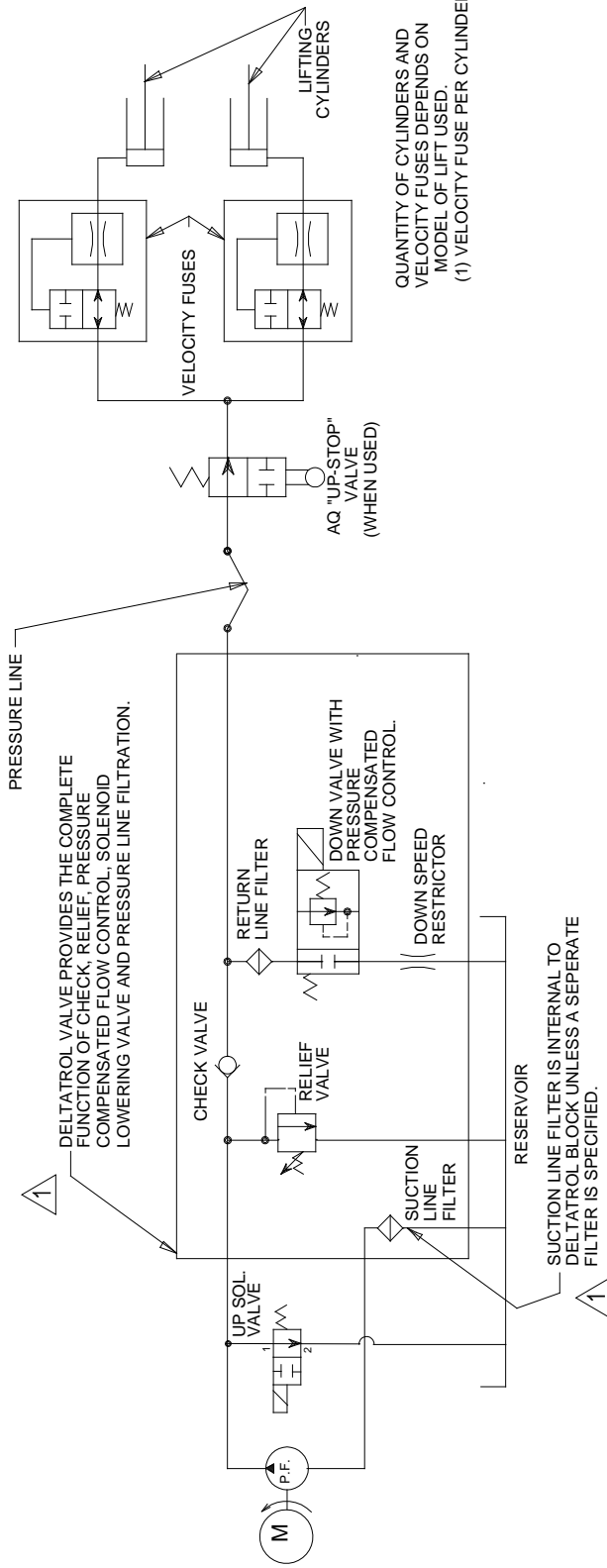
NOTES:

1. FOR USE WITH PUSHBUTTON CONTROLS.
2. SEE ASSEMBLY AND/OR SPEC. SHEET FOR SPECIFIC VOLTAGES, OR CONTROLS SUPPLIED AND CONFIGURATION.
3. MS = MOTOR STARTER
4. XFMR = TRANSFORMER
5. P.B. = PUSHBUTTON
6. SOL.= SOLENOID COIL
7. ALL INTERCONNECTING WIRING (BY OTHERS).
8. "UP" LIMIT SWITCH (OPTIONAL). WHEN USED, REMOVE JUMPER BETWEEN #6 AND #7.

©2005 COPYRIGHT RESERVED AUTOQUIP CORPORATION This drawing is the sole property of Autoquip Corp. and cannot be used for design and construction purposes of Autoquip Corp.	JOB NAME:		ORDER NO:	
	REFERENCE DRAWING:		DRAWING TITLE:	
APPROXIMATE WEIGHT:	DRAWN BY:	DATE:	QTY REQ'D:	PAGE:
TB	TB	9/16/99	1 OF 1	3
DRAWING NUMBER:	DRAWING NUMBER:			SIZE:
657-0050-0	657-0050-0			A

Continuous Running Vertical Power Unit

657-5007-0

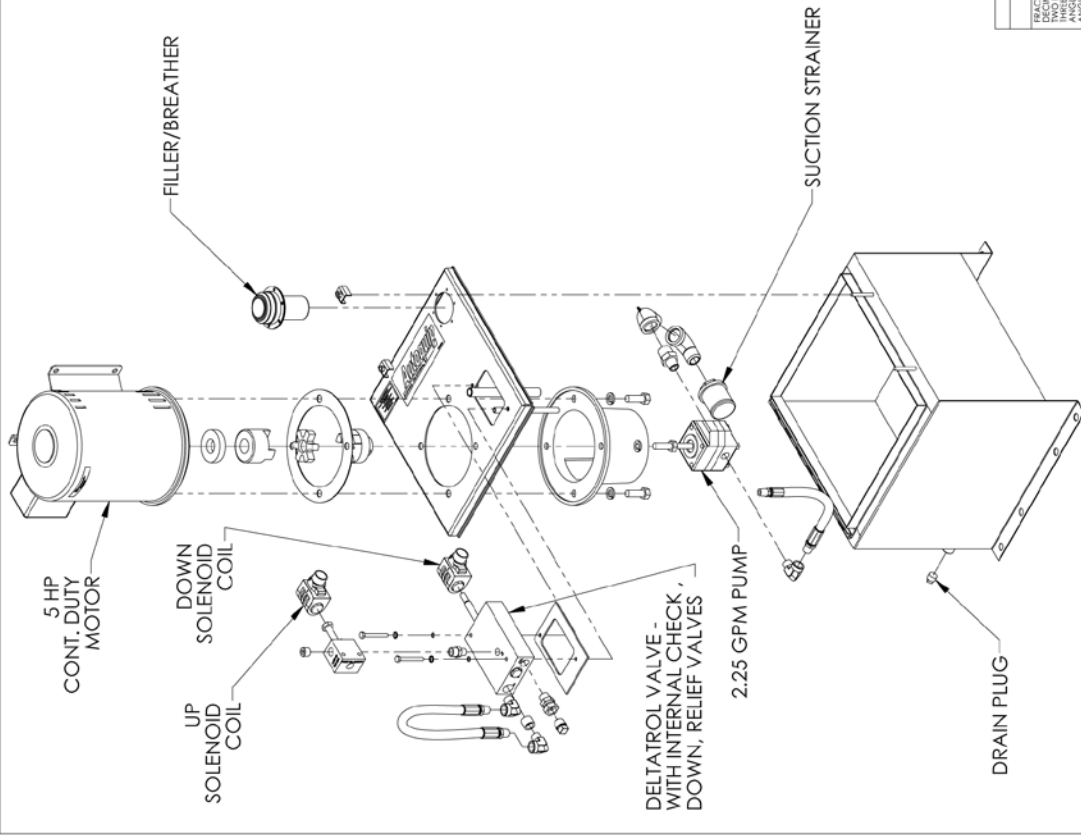


Continuous Running Vertical Unit

Autoquip		JOB NAME:		ORDER NO:	
REFERENCE DRAWING:	DRAWING TITLE:	HYD SCH FOR SCISSORS LIFT WIDELTATROL, CONT RUNNING		REV.:	
APPROXIMATE WEIGHT:	DRAWN BY:	DATE:	QTY REQ'D:	PAGE:	SIZE:
<2T	CG/MA	6/4/96	1	1 OF 1	A
			REV.:	DRAWING NUMBER:	
			1	657-5007-0	

ASSEMBLY 7 OF 8

NOTE:
DIMENSIONS ARE APPROXIMATE



Continuous Running Vertical Power Unit

UNLESS OTHERWISE SPECIFIED:		TOLERANCES		Autobquip		DATE	
FRACTIONS: 1/16, 1/8, 1/4, 3/8, 1/2, 3/4, 1, 1 1/4, 1 1/2, 1 3/4, 2, 2 1/4, 2 1/2, 3, 3 1/4, 3 1/2, 4, 4 1/4, 4 1/2, 5, 5 1/4, 5 1/2, 6, 6 1/4, 6 1/2, 7, 7 1/4, 7 1/2, 8, 8 1/4, 8 1/2, 9, 9 1/4, 9 1/2, 10, 10 1/4, 10 1/2, 11, 11 1/4, 11 1/2, 12, 12 1/4, 12 1/2, 13, 13 1/4, 13 1/2, 14, 14 1/4, 14 1/2, 15, 15 1/4, 15 1/2, 16, 16 1/4, 16 1/2, 17, 17 1/4, 17 1/2, 18, 18 1/4, 18 1/2, 19, 19 1/4, 19 1/2, 20		DECIMALS: .0005, .001, .002, .005, .01, .015, .02, .03, .04, .05, .06, .07, .08, .09, .1, .15, .2, .25, .3, .4, .5, .6, .7, .8, .9, 1.0, 1.5, 2.0, 3.0, 4.0, 5.0, 6.0, 7.0, 8.0, 9.0, 10.0		REFERENCE DRAWING: GENERIC S35 COMPONENTS		DATE: 02/25/13	
TRAJECTORIES: 10° MIN. (FOR STRUCTURAL STEEL)		SURFACE FINISH: 32		DRAWN BY: JCJ		CHECKED BY: TB	
THREADS: UNF, UNF-2A, UNF-3A, UNF-4A, UNF-5A, UNF-6A, UNF-7A, UNF-8A, UNF-9A, UNF-10A, UNF-11A, UNF-12A, UNF-14A, UNF-16A, UNF-18A, UNF-20A, UNF-22A, UNF-24A, UNF-26A, UNF-28A, UNF-30A, UNF-32A, UNF-34A, UNF-36A, UNF-38A, UNF-40A, UNF-42A, UNF-44A, UNF-46A, UNF-48A, UNF-50A, UNF-52A, UNF-54A, UNF-56A, UNF-58A, UNF-60A, UNF-62A, UNF-64A, UNF-66A, UNF-68A, UNF-70A, UNF-72A, UNF-74A, UNF-76A, UNF-78A, UNF-80A, UNF-82A, UNF-84A, UNF-86A, UNF-88A, UNF-90A, UNF-92A, UNF-94A, UNF-96A, UNF-98A, UNF-100A		MATERIALS: 304, 316, 304L, 316L, 304H, 316H, 304LN, 316LN, 304N, 316N, 304S, 316S, 304SS, 316SS, 304Ti, 316Ti, 304Cu, 316Cu, 304Al, 316Al, 304Inconel, 316Inconel, 304Titanium, 316Titanium, 304Copper, 316Copper, 304Aluminum, 316Aluminum, 304Inconel, 316Inconel, 304Titanium, 316Titanium, 304Copper, 316Copper, 304Aluminum, 316Aluminum		PERFORMANCE: 100% DEFECT FREE		SIZE: 7 OF 8	
BREAK ALL SHARP EDGES .007" MAX.		45° CHAMFER		REV: B		ASSEMBLY	